

ENGLISH
ESPAÑOL

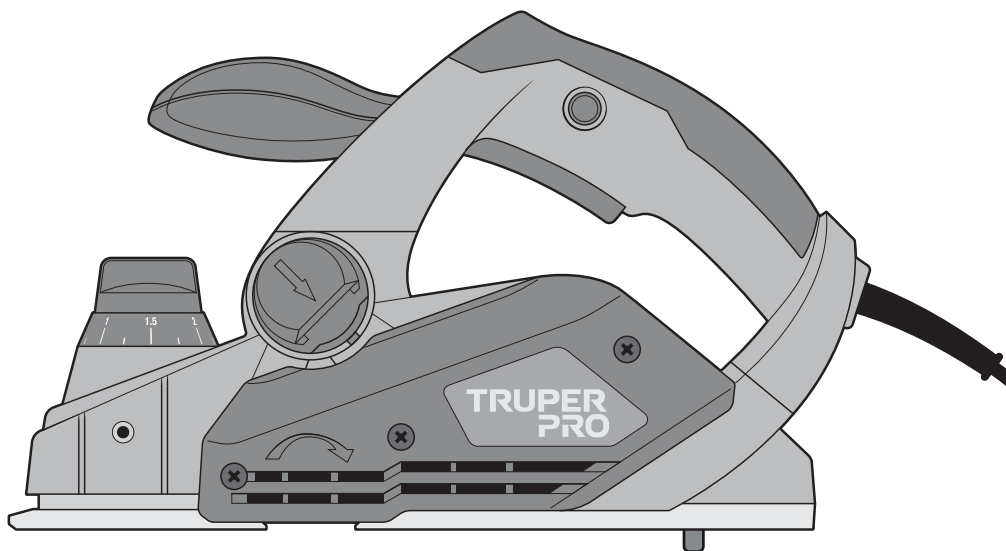
TRUPER[®] PRO

Manual

Electric planer

850 W

Power



Applies for:

Code

Item

100502

CEPEL-3-1/4A4



CEPEL-3-1/4A4

! CAUTION



Read this manual thoroughly
before using the tool.



Technical data	3
Power requirements	3
 General safety warnings for electric tools	4
 Safety warnings for the use of electric planers	5
Parts	6
Preparation	7
Start up	10
Maintenance	12
Notes	14
Authorized service centers	15
Warranty policy	16

CAUTION

To gain the best performance of the tool, prolong the duty life, make the Warranty valid if necessary, and to avoid hazards of fatal injuries please read and understand this manual before using the tool.

Keep this manual for future references.

The illustrations in this manual are for reference only. They might be different from the real tool.

Use and care recommendations



Respect the work cycles.

30 minutes of work per 15 minutes of rest. Maximum 3 hours daily.



Avoid using the cord to move, lift, or disconnect the tool.



Keep the tool's ventilation slots **CLEAN**.



Perform regular **MAINTENANCE** on your machine (page 12).

Technical data

TRUPER PRO

CEPEL-3-1/4A4

Code •	100502		
Description •	Electric planer		
Voltage •	127 V~	Frequency •	60 Hz
Current •	6.7 A		
Power •	850 W		
Speed •	17 000 RPM		
Cuts per minute •	34 000 cuts/min		
Planing width •	3 1/4" (80 mm)	Depth levels •	14 levels with 0.25 mm each one
Max planing depth •	0 mm - 3.5 mm		
Chip ejection •	Left – right		
Duty cycle •	30 min of work per 15 min rest. Maximum 3 hours daily.		
Conductors •	18 AWG x 2C with insulation temperature of 221 °F		
Insulation •	Class II	Grado IP •	IP20

The power cable has cable ties type: Y
The construction class of the tool is: Reinforced insulation
The thermal insulation class of the motor windings: Class E

⚠ WARNING If the power cable is damaged, it must be replaced by the manufacturer or a TRUPER Service Center to prevent any risk of electric shock or significant accident.

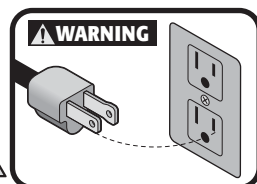
The electrical insulation of this tool is compromised by splashes or spillage of liquids during its operation. Do not expose it to rain, liquids, and moisture.



⚠ WARNING Before accessing the terminals, all power circuits must be disconnected.

Power Requirements

⚠ WARNING The double-insulated and reinforced insulated tools have a polarized plug (one prong is wider than the other). This plug fits into any polarized outlet and can only be connected in one way. If the plug does not fit into the outlet, turn it around. If it still does not fit, contact a qualified electrician or install a polarized outlet. Do not alter the plug in any way. Double insulation eliminates the need for a three-wire grounded power cord or a grounded electrical system.



⚠ WARNING When using an extension cord, use a gauge sufficient to carry the current your tool will consume. A lower gauge cable will cause voltage drops in the line, resulting in power loss and motor overheating. The following table shows the correct size to be used depending on the cable length and the amperage capacity indicated on the tool's data plate. If in doubt, use the next higher gauge.

Ampere Capacity	Number of Conductors	Extension gauge	
		from 1.8 m to 15 m	higher than 15 m
from 0 A and up to 10 A	3 (one grounded)	18 AWG(*)	16 AWG
from 10 A and up to 13 A		16 AWG	14 AWG
from 13 A and up to 15 A		14 AWG	12 AWG
from 15 A and up to 20 A		8 AWG	6 AWG

*It is allowed if the extensions themselves have an overcurrent protection device.

AWG = American Wire Gauge. Reference: NMX-J-195-ANCE

⚠ WARNING When operating power tools outdoors, use a VOLTECK grounded extension cable labeled "For Outdoors Use". These extensions are specially designed for operating outdoors and reduce the risk of electric shock.



ENGLISH

3



WARNING! Read all safety warnings and all instructions listed below carefully. Failure to follow any of them may result in electric shock, fire, and severe injury. **Keep the warnings and instructions for future reference.**

Work area

Keep your work area clean, organized, and well-lit.

Cluttered and dim areas can lead to accidents.



Do not operate the tool in explosive atmospheres, such as those containing flammable liquids, gas, or dust.

The electric tools produce sparks that can ignite flammable material.



Keep children and other individuals at a safe distance while using the equipment.

Distractions can cause loss of control and lead to accidents.



Electrical safety

Electrical tool plugs must match the outlet. Never modify the plug in any way. Do not use adapters with grounded electrical tools.

Unmodified electrical tools and matching plugs will reduce the risk of electric shock.



Avoid bodily contact with grounded surfaces, such as pipes, radiators, stoves, and refrigerators.

There is an increased risk of electric shock if your body is grounded.

Do not expose the tool to rain or humid conditions.

Water entering the tool increases the risk of electric shock.

Do not force the cable. Never use the cable for carrying, lifting, or disconnecting the tool. Keep the cable away from heat, oil, sharp edges, or moving parts.

Damaged or tangled cables increase the risk of electric shock.

When operating an electrical tool outdoors, use an extension cord suitable for outdoor use.

The use of a suitable outdoor-rated cable reduces the risk of electric shock.

If operating an electrical tool in a damp location is unavoidable, use a power source protected by a ground fault circuit interrupter (GFCI).

Using a Ground Fault Circuit Interrupter (GFCI) reduces the risk of electric shock.

Personal safety

Be alert, watch your actions, and use common sense when handling a tool. Do not use it if you are tired or under the influence of drugs, alcohol, or medication.

A moment of distraction while using the tool can cause personal injury.

Use safety equipment. Always wear eye protection.

Using safety equipment, such as safety glasses, dust masks, slip-resistant shoes, helmets, and ear protection, in appropriate conditions significantly reduces the risk of personal injury.



To avoid accidental starts, ensure the switch is in the "off" position before connecting to the power source and the battery or transporting the tool.

Carrying power tools with your finger on the switch or connecting power tools with the switch in the "on" position can cause accidents.

Remove any wrenches or adjusting tools before starting the power tool.

Wrenches or tools left on the rotating parts of the tool can cause personal injury.

Do not exceed your range of motion. Keep both feet firmly planted on the ground and always maintain balance.

This allows better control of the tool in unexpected situations.

Dress appropriately. Do not wear loose clothing or jewelry. Keep your hair, clothing, and gloves away from moving parts.

Loose clothes, jewelry, or long hair can get caught in moving parts.



If dust extraction and collection devices are available for the tool, check their connections and use them correctly.

The use of these devices reduces risks associated with dust.

Tool use and care

Do not force the tool. Use the appropriate tool for the task at hand.

The right tool performs better and is safer when used at the intended pace.



Do not use the tool if the switch is not functioning.

Any power tool that cannot be turned on or off is dangerous and must be repaired before operation.

Disconnect the tool from the power source and battery before making any adjustments, changing accessories, or storing it.

These measures reduce the risk of accidentally starting the tool.

Store the tools out of the reach of children and do not allow them to be handled by individuals unfamiliar with the tools or their instructions.

Power tools are dangerous in untrained hands.



Maintain the tool. Ensure that the moving parts are not misaligned or jammed, that there are no broken parts, or that no other conditions may affect its operation. Repair any damage before using the tool.

Many accidents are caused by inadequate tool maintenance.



Keep cutting accessories sharp and clean.

Well-maintained cutting accessories are less likely to jam and more accessible to control.

Use the tool, components, and accessories according to these instructions and as intended for the type of tool in appropriate working conditions.

Using the tool for applications other than those for which it is designed could cause a hazardous situation.

Service

Repair the tool in a TRUPER Authorized Service Center using only identical spare parts.

This will ensure that the safety of the power tool is maintained.




This tool is in compliance with the Official Mexican Standard (NOM - Norma Oficial Mexicana).

Safety warnings

for the use of electric planers

TRUPER
PRO

Before operating the tool

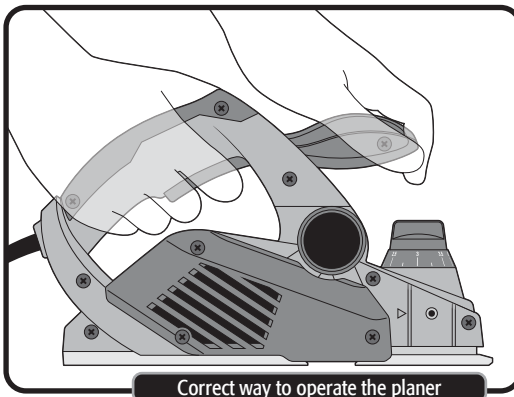
- Fully unwind the extension cord to prevent potential overheating.
- Ensure the power outlet voltage matches the voltage specified on the tool's nameplate. 
- ⚠ CAUTION** • Clear the work area of rags, clothing, cables, ropes, or anything that could get caught in the tool's blades.
- ⚠ WARNING** • Remove any nails, screws, or other objects from the workpiece. These could damage the blades and the tool and pose a safety hazard.
- ⚠ CAUTION** • Before starting any work, ensure the blade installation screws are tightly secured.
- Turn on the tool and let it run for a few moments. Check for any vibrations that may indicate improper installation or an unbalanced blade.

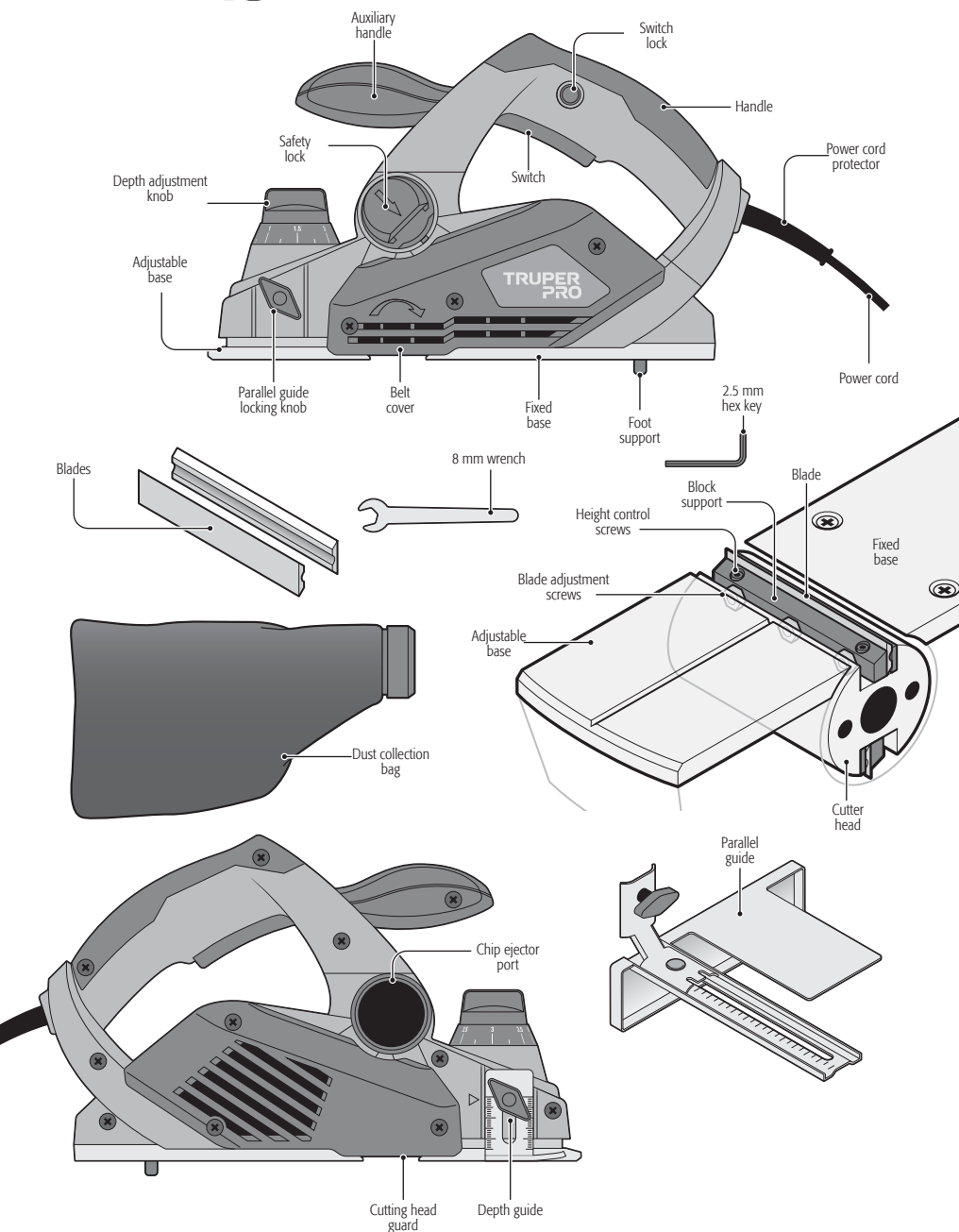
While operating the tool

- Whenever possible, use a dust extraction system.
- ⚠ CAUTION** • When operating the tool, hold it only by the handle and its insulated parts. If you contact a hidden wire, the exposed metal parts of the tool could shock the operator.
- Firmly grip the tool with both hands.
- ⚠ DANGER** • Keep your hands away from the rotating parts.
- ⚠ CAUTION** • Ensure the blades are not in contact with the workpiece when turning on the machine.
- Wait for the blades to reach full speed before cutting.
- Keep the tool at least 8 inches (20 cm) away from your face and body.
- ⚠ CAUTION** • Never leave the tool running unattended. Operate it only when you can control it with both hands and turn it off before letting go.
- After extended operation, the metal parts may become very hot.

After operating the tool

- When you've finished operating the tool, turn it off and engage the rest support by rotating it downward so the blades do not contact anything. Then, place it on a wooden block.
- Before making any adjustments, turn off the tool and wait for the blades to come to a complete stop.
- ⚠ DANGER** • Never insert your finger into the chip discharge hole. To remove excess chips, turn off, unplug the tool, and use a stick to clear the chips.
- When necessary, replace both blades at the same time. Otherwise, the resulting imbalance will cause vibrations and shorten the life of the blades and the tool. Handle the blades with extreme care.



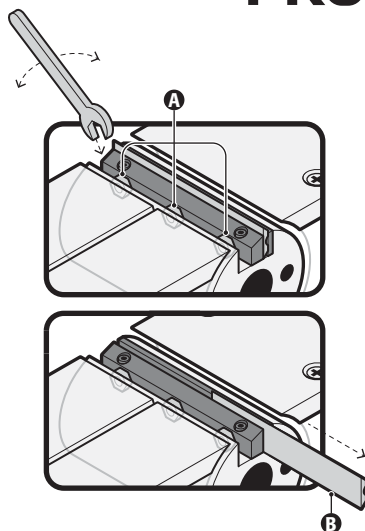


Blade replacement

The blades should be adjusted so that the cutting edge is level with the height of the fixed base (see "Blade leveling" below).

CAUTION • Always ensure the tool is turned off and unplugged before working on it.

- Carefully tighten the blade screws when installing the blades on the tool. A loose screw can be dangerous. Always check if they are firmly tightened.
- Handle the blades with extreme care. Wear gloves or cloths to protect your fingers or hands when removing or installing them.
- Only the TRUPER wrench is used to install or remove the blades. Otherwise, you might over-tighten or under-tighten the mounting bolts, causing injury.



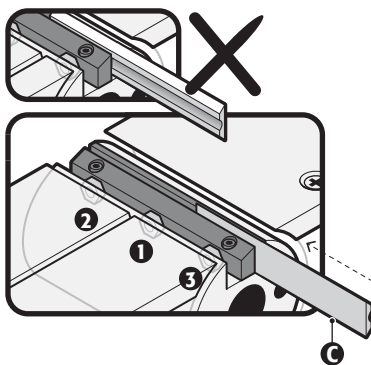
Disassembling the planer blades

- To reverse or replace the blades, they should be adjusted so that the cutting edge is level with the height of the fixed base (see "Blade leveling" below).

- To remove the worn blades, loosen the three adjustment screws (A) with the included 8 mm wrench by turning them clockwise.

- Slide the worn blade (B) through the cutter head support block. You can use a piece of wood to do this.

The blade has a cutting edge on both sides. Reverse the blade so that the unused side is in the cutting position. If both sides are worn, the blade must be replaced.



Mounting the blades

- With the worn blade removed, slide the new blade (C) through the block and align the blades across the block's width.

- The blade's groove should face the fixed base of the tool.

- Evenly tighten the three adjustment screws in the tightening sequence (1 / 2 / 3).

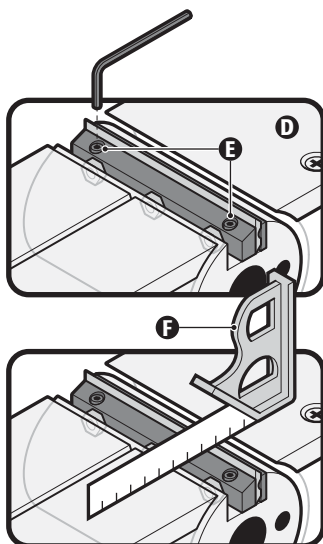
- Repeat the process with the other blade.

CAUTION Before putting the tool into service, check that the adjustment screws are firmly seated. Rotate the cutter head by hand to ensure the planer blade does not rub against anything.

Blade leveling

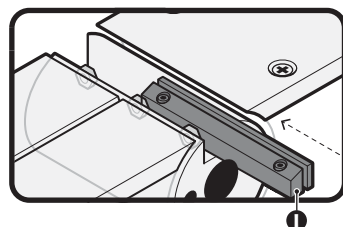
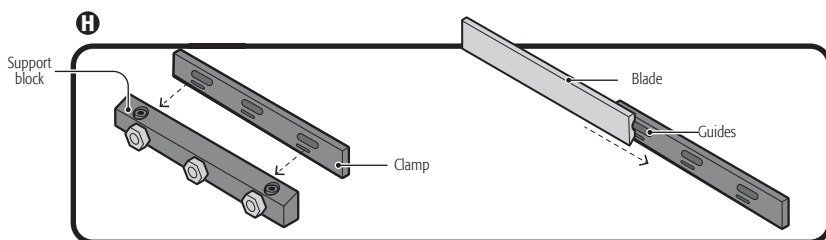
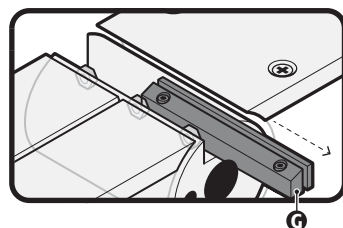
The blades should be adjusted to the height of the base **(D)**. If not, follow these instructions:

- Slightly loosen the adjustment screws **(A)** with the 8 mm wrench.
- Using the included 2.5 mm hex key, turn the height control screws **(E)** clockwise to raise and counterclockwise to lower, as needed for your planer.
- Level the height by resting a square **(F)** on the fixed and adjustable bases (set to 0).
- Finally, tighten the adjustment screws with the 8 mm wrench.



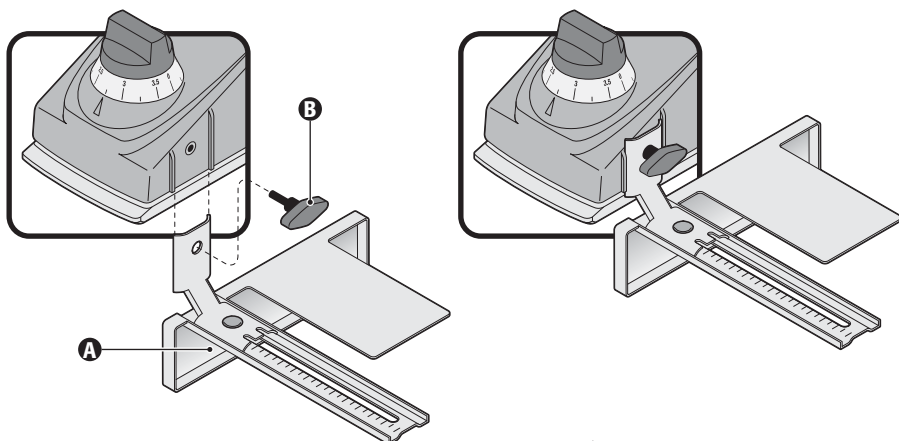
Replacement of jaws

1. Disassemble the blades following the instructions in the "Disassembling the planer blades" section.
2. Remove the blade holder by sliding it through the roller **(G)**.
3. Assemble the new jaws by placing the clamp on the support block, ensuring the pins align **(H)**.
4. Position the jaw on the roller by sliding it through **(I)**.
5. Assemble the blade following the steps in the "Mounting the blades" section.
6. Align the blades following the steps in the "Blade leveling" section.



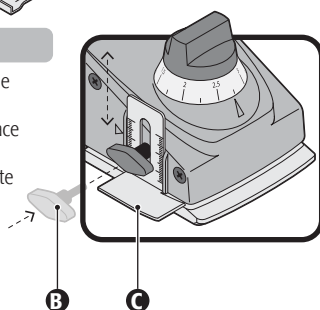
Installation of the parallel guide

- Place the parallel guide (A) on the opposite side of the depth guide.
- Secure the parallel guide in place with a locking knob (B).



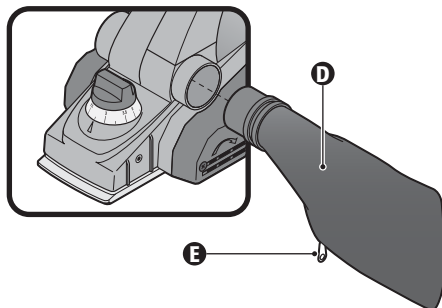
Installation of the depth guide

- Place the depth guide (C) on the opposite side of the parallel guide (A).
- Like the parallel guide, secure the depth guide in place with a locking knob (B).
- Adjust the depth guide up or down to the appropriate position for the task at hand and tighten the knob to secure its height.



Installation of the dust collection bag

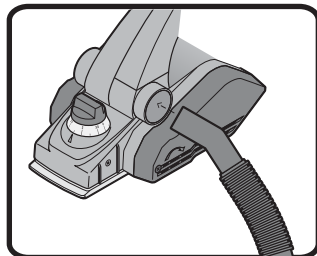
- Attach the dust collection bag (D) to the chip ejector port. The bag's nozzle is wedge-shaped.
- Push the nozzle into the port when attaching the dust collection bag to prevent it from detaching during tool operation.
- Remove the dust collection bag from the tool and pull the closure (E) when it is half full. Empty the bag and lightly tap it to remove any particles stuck inside that could hinder future collection.



NOTE Connecting a vacuum cleaner to this tool can achieve more effective performance and cleaner operation.

Vacuum cleaner installation (Ejector port not compatible with TRUPER vacuum cleaners)

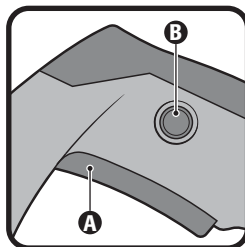
- You can connect a vacuum cleaner to the chip ejector port instead of using the dust collection bag for more effective performance and cleaner operation.
- Connect a vacuum hose to the nozzle, as shown in the image.
- The port is not compatible with TRUPER vacuum cleaners.



Start up

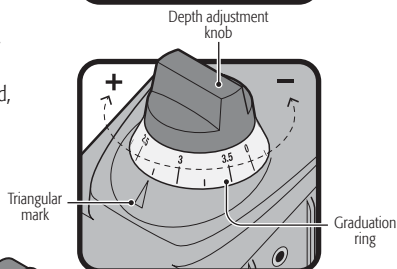
Operation control and adjustment

- Plug the power cord into the outlet.
- Hold down the switch lock **(B)** to unlock the switch **(A)**. The switch lock prevents accidental activation.
- Press the switch **(A)** to start the cutting head rotation.
- To stop the cutting head, release the switch **(A)**.



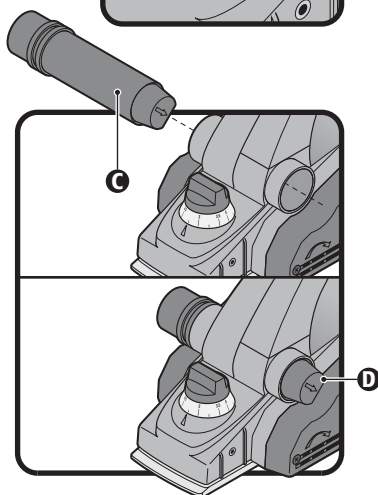
Depth adjustment

- Turn the depth adjustment knob and align the measurement in millimeters indicated on the knob's graduation ring with the triangular mark to set the adjustable base to the desired height.
- If precise depth adjustment is necessary, plane a piece of scrap wood, measure the difference in thickness, and adjust the value if needed.



Chip extraction

- The planer has a chip ejection duct that can be set to expel chips either to the right or left **(C)**.
- The duct runs from one side of the planer to the other through the ejection conduits, blocking one conduit and allowing chips to exit. To remove the duct, move the locking mechanism **(D)** in the direction indicated by the arrow and push it out. To insert it, place it on either the right or left side and push it in until the mechanism locks it.
- Attach the dust collection bag to the open chip ejection port to facilitate disposal.
- You can connect a workshop dust extraction system or a household vacuum cleaner to the chip ejection port, making the work environment safer and cleaner.



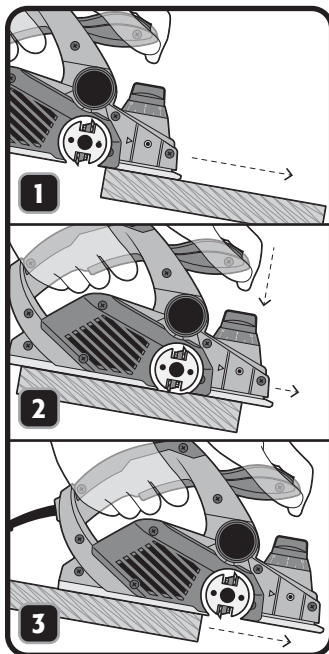
Planing operation instructions

- Firmly grasp the depth adjustment knob with one hand and place your other hand on the handle.
- Place the adjustable base on the workpiece's surface without letting the blades contact it (1).
- Turn on the tool and wait for the blades to reach maximum speed.
- Holding the tool with both hands, smoothly move it forward, applying pressure to the front using the auxiliary handle (2). Planing will be easier if the workpiece is slightly angled so that the planing is done downhill.
- Push the tool beyond the edge of the workpiece without tilting it downward (3).
- The planing speed and the cut depth determine the finish's quality. To achieve a rough cut, increase the depth of the cut. To achieve a fine finish, decrease the depth of the cut and advance the tool more slowly.

⚠ CAUTION Advancing the tool too quickly can result in poor-quality cuts and damage to the blades or motor. If the movement is faster, the cut may burn or spoil.

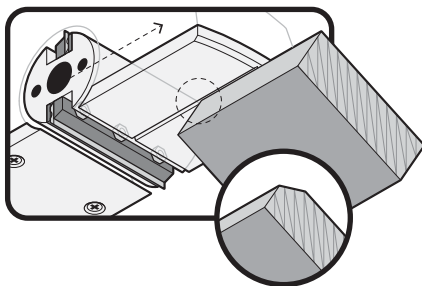
The correct speed of advancement depends on the type of material being cut and the depth of planing. Before planing the workpiece, test on a scrap piece of material to calibrate the correct speed and cutting dimensions.

⚠ WARNING Secure the workpiece with clamps to avoid accidents and defects in the cut.



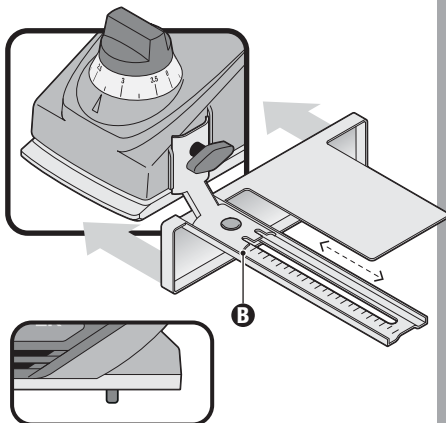
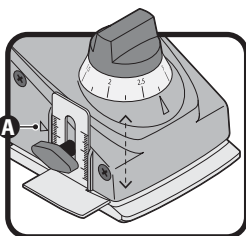
Bevel cuts

- To make a bevel cut, align the corner of the workpiece with the V-groove for beveling on the adjustable base.
- Run the planer along the edge, keeping the groove aligned with the corner.



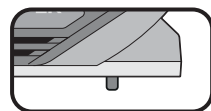
Stepped cuts

- Attach both guides to the planer as described in the "Assembly" section to make stepped cuts.
- Raise or lower the depth guide to match the height of the step. The triangular mark **(A)** will indicate the height of the step-in millimeters and inches.
- Slide the parallel guide arm until the marks **(B)** align with the cut width measurement. The guide scale is in millimeters and inches.
- Once the position of both guides is set, tighten all their knobs to prevent adjustments during the cut.
- Adjust the planing depth (see "Depth adjustment"). It is recommended that small amounts of material be removed.
- Apply lateral pressure against the face of the workpiece during the cut. Otherwise, the result will be uneven.



Support foot

- After making a cut, lift the rear of the tool so the support foot appears below the level of the fixed base.
- This prevents the tool's blades from getting damaged.



Maintenance

⚠ WARNING Disconnect the power cord from the outlet before making any adjustments, servicing, or maintaining the tool.

Cleaning and care

- Keep the tool free of dust. Never use water or chemical cleaners to clean the tool. Clean only with a clean, dry cloth.
- Always keep the vents clean and free of obstructions to ensure proper cooling of the motor.
- Regularly inspect all mounting screws and ensure they are tightened properly. If any screws are loose, tighten them immediately.
- The armature and motor are the heart of the power tool. Be very careful that they are not affected by oil or water.
- Periodically check the power cord for any damage. If it is damaged, have the cord replaced at a TRUPER Authorized Service Center.

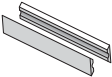
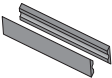
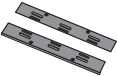
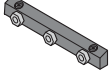
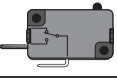
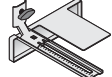



Carbon brush replacement

- When worn out, the carbon brushes should be checked periodically and replaced at a TRUPER Authorized Service Center. After they have been replaced, ask to check if the new carbon brushes can move freely in the brush holder. Then, turn on the tool and keep it running for 5 minutes to match the contact of the carbon brushes and the commutator.
- Only original TRUPER replacement carbon brushes should be used, specifically designed with the appropriate hardness and electrical resistance for each type of motor. Out-of-specification carbon brushes can damage the motor.
- When changing carbon brushes, always replace both brushes.

Service

- Tool servicing should only be carried out at an Authorized TRUPER Service Center. Service and maintenance performed by unqualified persons can be dangerous and may result in personal injury as well as voiding the product warranty.

Replacement parts

Part	Code	Item
Tungsten carbide blades 	100649	CU-CE-3-1/4
Steel blades 	26126	CU-CE-3-1/4P
Holders 	101224	SUJ-CE-3-1/4A4
Support block 	101225	JGO-CE-3-1/4A4
Switch 	101222	INT-CE-3-1/4A4
Parallel guide 	101226	GUIA-CE-3-1/4A4
Dust collection bag 	101227	BOL-CE-3-1/4A4
Belt 	101223	BAN-CE-3-1/4A4
Replacement carbon brushes 	101830	CB--CE-3-1/4A4



In the event of any problem contacting a TRUPER Authorized Service Center, please see our webpage **WWW.TRUPER.COM** to get an updated list, or call our toll-free numbers **800 690-6990** or **800 018-7873** to get information about the nearest Service Center.

AGUASCALIENTES **DE TODO PARA LA CONSTRUCCIÓN**
GRAL. BARRAGÁN #1201, COL. GREMIAL, C.P. 20030,
AGUASCALIENTES, AGS. TEL.: 449 994 0537

BAJA CALIFORNIA **SUCURSAL TIJUANA**
AV. LA ENCANADA, LOTE #5, PARQUE INDUSTRIAL EL
FLORIDO II, C.P. 22244, TIJUANA, B.C.
TEL.: 664 969 5100

BAJA CALIFORNIA SUR **FIX FERRETERÍAS**
FELIPE ÁNGELES ESQ. RUIZ CORTÍNEZ S/N, COL. PUEBLO
NUEVO, C.P. 23670, CD. CONSTITUCIÓN, B.C.S.
TEL.: 613 132 1115

CAMPECHE **TORNILLERÍA Y FERRETERÍA AAA**
AV. ÁLVARO OBREGÓN #324, COL. ESPERANZA
C.P. 24080 CAMPECHE, CAMP. TEL.: 981 815 2808

CHIAPAS **FIX FERRETERÍAS**
AV. CENTRAL SUR #27, COL. CENTRO, C.P. 30700,
TAPACHULA, CHIS. TEL.: 962 118 4083

CHIHUAHUA **SUCURSAL CHIHUAHUA**
AV. SILVESTRE TERRAZAS #128-11, PARQUE INDUSTRIAL
BAFAR, CARRETERA MÉXICO CUAUHTÉMOC, C.P. 31415,
CHIHUAHUA, CHIH. TEL.: 614 434 0052

CIUDAD DE MÉXICO **FIX FERRETERÍAS**
EL MONSTRUO DE CORREGIDORA, CORREGIDORA #35,
COL. CENTRO, C.P. 06060, CUAUHTÉMOC, CDMX.
TEL.: 55 5522 5031 / 5522 4861

COAHUILA **SUCURSAL TORREÓN**
CALLE METAL MECÁNICA #280, PARQUE INDUSTRIAL
ORIENTE, C.P. 27278, TORREÓN, COAH.
TEL.: 871 209 68 23

COLIMA **BOMBAS Y MOTORES BYMTESA DE MANZANILLO**
BLVD. MIGUEL DE LA MADRID #190, COL. 16 DE
SEPTIEMBRE, C.P. 28239, MANZANILLO, COL.
TEL.: 314 332 1986 / 332 8013

DURANGO **TORNILLOS ÁGUILA, S.A. DE C.V.**
MAZURIO #200, COL. LUIS ECHEVERRÍA, DURANGO,
DGO. TEL.: 618 817 1946 / 618 818 2844

ESTADO DE MÉXICO **SUCURSAL CENTRO JILOTEPEC**
PARQUE INDUSTRIAL # 1, COL. PARQUE INDUSTRIAL
JILOTEPEC, JILOTEPEC, EDO. DE MÉX. C.P. 54257
TEL.: 761 782 9101 EXT. 5728 Y 5102

GUANAJUATO **CÍA. FERRETERA NUEVO MUNDO S.A. DE C.V.**
AV. MÉXICO - JAPÓN #225, CD. INDUSTRIAL, C.P. 38010,
CELAYA, GTO. TEL.: 461 617 7578 / 79 / 80 / 88

GUERRERO **CENTRO DE SERVICIO ECLIPSE**
CALLE PRINCIPAL MZ1 LT. 1, COL. SANTA FE, C.P. 39010,
CHILPANCINGO, GRO. TEL.: 747 478 5793

HIDALGO **FERREPRECIOS S.A. DE C.V.**
LIBERTAD ORIENTE #304 LOCAL 30, INTERIOR DE PASAJE
ROBLEDO, COL. CENTRO, C.P. 43600, TULANCINGO,
HGO. TEL.: 775 753 6615 / 775 753 6616

JALISCO **SUCURSAL GUADALAJARA**
AV. ADOLFO B. HORN # 6800, COL. SANTA CRUZ DEL
VALLE, C.P.: 45655, TLAJOMULCO DE ZUNIGA, JAL.
TEL.: 33 3606 5285 AL 90

MICHOACÁN **FIX FERRETERÍAS**
AV. PASEO DE LA REPÚBLICA #5140-A, COL.
EX-HACIENDA DE LA HUERTA, C.P. 58050, MORELIA,
MICH. TEL.: 443 334 6858

MORELOS **FIX FERRETERÍAS**
CAPITÁN ANZURES #95, ESQ. JOSÉ PERDIZ, COL.
CENTRO, C.P. 62740, CUAUTLA, MOR.
TEL.: 735 352 8931

NAYARIT **HERRAMIENTAS DE TEPEC**
MAZATLÁN #117, COL. CENTRO, C.P. 63000, TEPEC, NAY.
TEL.: 311 258 0540

NUEVO LEÓN **SUCURSAL MONTERREY**
CARRETERA LAREDO #300, 1B MONTERREY PARKS,
COLONIA PUERTA DE ANÁHUAC, C.P. 66052, ESCOBEDO,
NUEVO LEÓN, TEL.: 81 8352 8791 / 81 8352 8790

OAXACA **FIX FERRETERÍAS**
AV. 20 DE NOVIEMBRE #910, COL. CENTRO, C.P. 68300,
TUXTEPEC, OAX. TEL.: 287 106 3092

PUEBLA **SUCURSAL PUEBLA**
AV. PERIFÉRICO #2-A, SAN LORENZO ALMECATLA,
C.P. 72710, CUAUHTLACINGO, PUE.
TEL.: 222 282 8282 / 84 / 85 / 86

QUERÉTARO **ARU HERRAMIENTAS S.A. DE C.V.**
AV. PUERTO DE VERACRUZ #110, COL. RANCHO DE
ENMEDIO, C.P. 76842, SAN JUAN DEL RÍO, QRO.
TEL.: 427 268 4544

QUINTANA ROO **FIX FERRETERÍAS**
CARRETERA FEDERAL MZ. 46 LT. 3 LOCAL 2, COL. EJIDAL,
C.P. 77710 PLAYA DEL CARMEN, Q.R.
TEL.: 984 267 3140

SAN LUIS POTOSÍ **FIX FERRETERÍAS**
AV. UNIVERSIDAD #1850, COL. EL PASEO, C.P. 78320,
SAN LUIS POTOSÍ, S.L.P. TEL.: 444 822 4341

SINALOA **SUCURSAL CULIACÁN**
AV. JESÚS KUMATE SUR #4301, COL. HACIENDA DE LA
MORA, C.P. 80143, CULIACÁN, SIN.
TEL.: 667 173 9139 / 173 8400

SONORA **FIX FERRETERÍAS**
CALLE 5 DE FEBRERO #517, SUR LT. 25 MZ. 10, COL.
CENTRO, C.P. 85000, CD. OBREGÓN, SON.
TEL.: 644 413 2392

TABASCO **SUCURSAL VILLAHERMOSA**
CALLE HELIO LOTES 1, 2 Y 3 MZ. #1, COL. INDUSTRIAL,
2A ETAPA, C.P. 86010, VILLAHERMOSA, TAB.
TEL.: 993 353 7244

TAMAULIPAS **VM ORINGS Y REFACCIONES**
CALLE ROSITA #527 ENTRE 20 DE NOVIEMBRE Y GRAL.
RODRÍGUEZ, FRACC. REYNOSA, C.P. 88780, REYNOSA,
TAMS. TEL.: 899 926 7552

TLAXCALA **SERVICIOS Y HERRAMIENTAS INDUSTRIALES**
PABLO SIDAR #132, COL. BARRIO DE SAN BARTOLOMÉ,
C.P. 90970, SAN PABLO DEL MONTE, TLAX.
TEL.: 222 271 7502

VERACRUZ **LA CASA DISTRIBUIDORA TRUPER**
BLVD. PRIMAVERA, ESQ. HORTENSIA S/N, COL.
PRIMAVERA C.P. 93308, POZA RICA, VER.
TEL.: 782 823 8100 / 826 8484

YUCATÁN **SUCURSAL MÉRIDA**
CALLE 33 #600 Y 602, LOCALIDAD ITZINCAB Y MULSAY,
MPIO. UMAN, C.P. 97390, MÉRIDA, YUC.
TEL.: 999 912 2451

Code	Model	Brand
100502	CEPEL-3-1/4A4	TRUPER PRO

Warranty. Duration: 3 year. Coverage: parts, components and workmanship against manufacturing or operating defects, except if used under conditions other than normal; when it was not operated in accordance with the instructive; was altered or repaired by personnel not authorized by TRUPER®. To make the warranty valid, present the product, stamped policy or invoice or receipt or voucher, in the establishment where you bought it or in Corregidora 35, Centro, Cuauhtémoc, CDMX, 06060, where you can also purchase parts, components, consumables and accessories. It includes the costs of transportation of the product that derive from its fulfillment of its service network. . Phone number 800-018-7873. Made in China. Imported by TRUPER, S.A. de C.V. Parque Industrial 1, Parque Industrial Jilotepec, Jilotepec, Edo. de Méx. C.P. 54257, Phone number 761 782 9100.

Stamp of the business. Delivery date:

