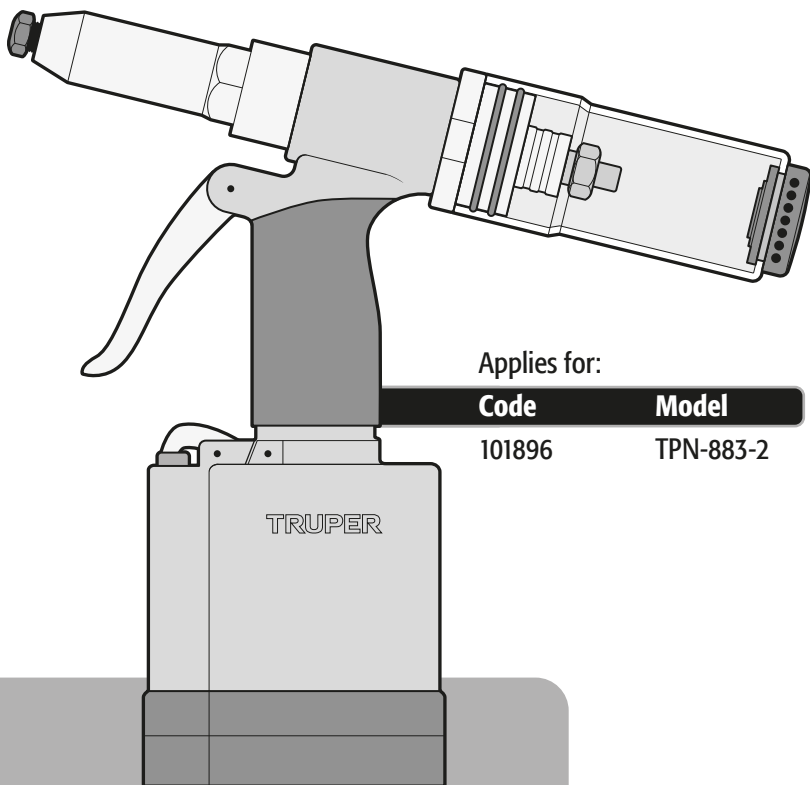


Manual

Pneumatic Rivet Gun



Applies for:



Code	Model
101896	TPN-883-2

TPN-883-2

 **WARNING** Use oil continuously to lubricate the tool

 **CAUTION**  Read the entire manual before using the tool



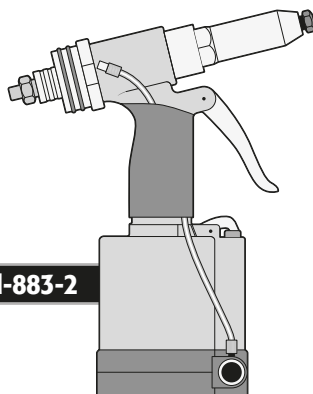
Technical specifications	3
Filtering and lubrication requirements	3
 General safety warnings for pneumatic tools	4
 Risk control when using pneumatic tools	5
Parts	6
Assembly	6
Start up	7
Maintenance	8
Notes	10
Authorized service centers	11
Warranty policy	12

CAUTION

To gain the best performance of the tool, prolong the duty life, make the Warranty valid if necessary, and to avoid hazards of fatal injuries please read and understand this Manual before using the tool.

Keep this manual for future references.

The illustrations in this manual are for reference only. They might be different from the real tool.



TPN-883-2

Technical specifications



TPN-883-2

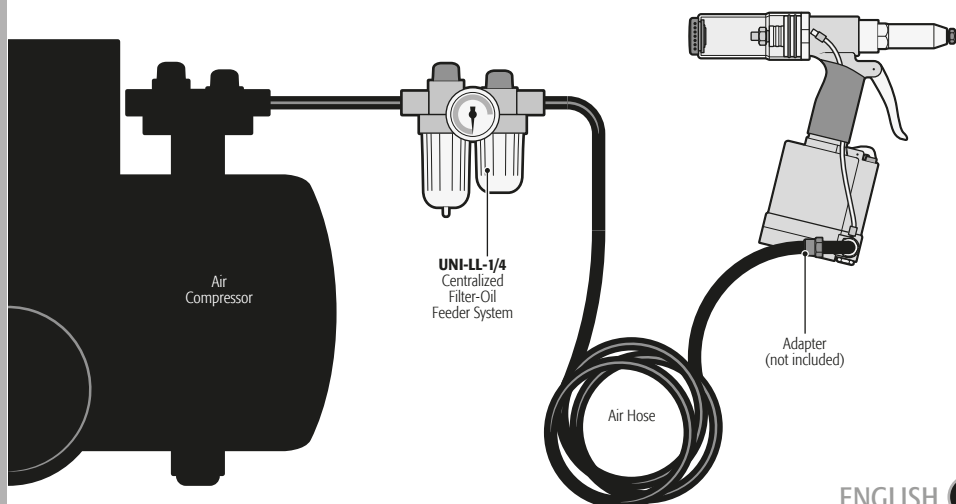
Code	101896
Description	Pneumatic rivet gun
Length and Height	7" x 11"
Cylinder Diameter	3"
Traction Force	1984 lb
Type of Rivet	Blind rivet
Rivet Capacity	3/32", 1/8", 5/32", 3/16"
Work Pressure	90 PSI
Weight with no accessories	3.5 lb
Air inlet Connection	1/4 NPT
Air Consumption	3.5 CFM
Noise Level	76.3 dB

CAUTION Consider the increase of the line pressure or the inner diameter of the hose to compensate the use of very long hoses (more than 26 ft.). The hose minimum inner diameter shall be 3/8" and the connectors shall be 1/4 NPT. Use good quality and the right size of couplers and accessories.

Filtering and lubrication requirements

CAUTION Dust, water and lack of oil specific for using in pneumatic tools are the main cause of potential flaws with the tool. We recommend installing a **TRUPER** Brand **UNI-LL-1/4** centralized filter-oil feeder system. This system assures lubrication reducing 80% oil consumption significantly increasing the breathing air quality for the operator.

- The filter-oil feeder system must be regulated to administer 3 to 6 drops per minute.
- Drain the water in the air compressor tank and also condensation in the hoses before using the tool. Consult the air compressor instructions





Keep your work area clean, tidy and well lit.

CAUTION Cluttered and dark areas can cause accidents.



Never use the tool in explosive environments or in the presence of flammable liquids or with no ventilation.

DANGER Sparks generated by the tool could cause explosion or fire.



Keep children and other people at a safe distance while using the tool.

WARNING Distractions can make lose control and cause accidents.



Avoid making contact with power lines and circuits.

DANGER Place an avoid power lines and circuits especially hidden wiring including grounded objects.



Stay alert, be cautious and use common sense.

CAUTION Familiarity with the use of the tool could distract you while operating it. This can cause accidents.

Do not use the tool if tired or under the influence of drugs, alcohol or medication.

DANGER A moment distraction while using the tool can cause severe personal injury.

Use the tool with all its parts in place and in good repair.

WARNING Failure to comply with this instruction can expose you to severe injury.

Secure and support correctly the work piece .

CAUTION Use vices and a stable work surface.

Never force the tool.

CAUTION Working within the range of the tool design assures a better and safer job.



Store the tool in a safe place away from children reach.

WARNING Pneumatic tools are dangerous in inexperienced hands.



Wear the right clothing.

WARNING Loose clothing, jewelry or long hair can get caught in the moving parts.



Keep hands away from the moving and / or rotating parts.

WARNING Failure to comply with this warning expose you to severe personal injury such as cuts, burns and crushing.



Wear the adequate personal protection equipment.

CAUTION Use of eye protection, dust mask, anti-squid safety shoes, and protection helmet and safety gloves considerably reduce risk of injuries.



Disconnect the air hose from the tool before servicing or changing accessories.

WARNING To prevent the tool from accidentally starting up and cause accidents.

Never use the tool if the switch is not working or if it is not correctly assembled.

WARNING Using the tool in disrepair expose you to severe personal injury. Repair immediately in a **TRUPER** Authorized Service Center.

Do not overreach.

CAUTION Good footing and balance allow having better control on the tool in unexpected situations.

Never pull the air hose.

WARNING Do not use the hose to carry the tool or disconnect it from the air supply. Damaged or tangled hoses may burst and shoot residues towards the operator.

Prevent accidentally starting the tool.

WARNING Double check the air intake is disconnected before lubricating, setting accessories or servicing the tool.



Remove all the vices before starting the tool.

DANGER Additional tools, or vices set onto a rotating piece in the tool may cause severe personal injury.

Service the tool and verify it is in excellent conditions before using it.

CAUTION Double-check carefully all the mobile parts, alignment and assembly. Do this inspection regularly. Look for any damaged element or malfunctioning part. Replace immediately in a **TRUPER** Authorized Service Center.



Accessories.

CAUTION Use only accessories or spare parts indicated in this Manual or certified by **TRUPER**.

Never leave the tool running unattended.

CAUTION Disconnect the tool from the air supply after operating and before storing in a safe place to prevent accidents.

Risk control

when using pneumatic tools



Injury Risk to Head and Eyes



⚠ WARNING • Compressed air used with pneumatic tools may be dangerous. Objects like vices, burr, splinters, dust and other residues can get shot out at great speed driven by the airflow and enter into your eyes or hit your head. Airflow by itself can cause damage on soft tissues in eyes, ears, etc.

⚠ CAUTION • Tool's accessories can loosen or break and sent particles towards the operator or other people in the work area.

Prevent injury to head and eyes

- When operating pneumatic equipment wear protecting eyeglasses complying with ANSI Z87.1 Standard. As an additional protection wear a mask.
- Never aim the airflow to people or animals.
- Disconnect the air hose from the tool when not in use.
- Never leave the tool unattended when connected to the air inlet.
- Before using the tool verify all the parts and accessories are securely fastened.



Risk of explosion



⚠ WARNING • Inadequate handling of pressure in pneumatic equipment may cause an explosion and severe injury, as well as, using any gas different from compressed air causes explosions.

Preventing an explosion

- Before using the tool double-check that the compressed air supply is regulated to the tool specified pressure and is not over that level.
- Never connect the tool into a pressure supply exceeding 200 PSI, neither oxygen nor any other bottled gas, combustible or reactive.
- Use clean, dry and regulated compressed air with pressure between 80 PSI and 100 PSI.

Risk of Hearing Loss



⚠ WARNING • Being exposed to noise generated by pneumatic tools during long periods of time can permanently damage hearing and cause hearing loss.

Preventing Hearing Loss

- When operating pneumatic equipment always wear hearing protection complying with ANSI S3.19 Standard.



Risk of Injury



⚠ WARNING • Damaged hoses can bust and cause severe injuries or hearing loss.

Preventing Injuries

- Do not abuse the hose or the connectors.
- Keep the hose away from sharp or abrasive surfaces.
- Disconnect the hose when loading the cartridge.
- Never use the hose to carry the tool.
- Never pull the hose for disconnect it.
- Do not expose the hose to heat, oil or solvents.
- Before operating the tool verify the hoses are not damaged.
- Use hoses that support at least, 150 PSI or 150% of the system maximum pressure, whichever is higher.


• Brackets get lose and be projected causing severe injuries or property damage.

• Double check that all the connections and brackets are correctly installed.

• Tools to start unexpectedly may cause severe injuries .

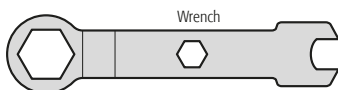
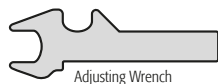
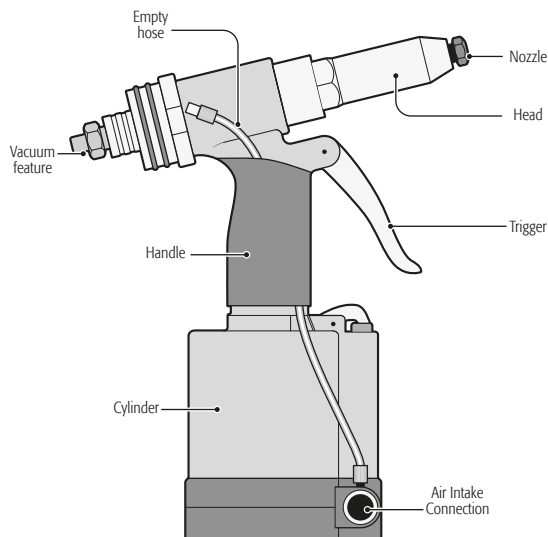
• Never carry the tool holding the trigger.
• Disconnect the tool air hose when not in use.
• Never leave the tool unattended when connected to the air inlet .

• Poorly maintained tools and accessories may cause severe injuries.

• Keep the tools clean. A well-kept and lubricated tool delivers a better performance and is easier to control.
• Any repairs can only be carried out in a  **TRUPER**® Authorized Service Center.

• Damaged or banged tools may cause severe injuries.

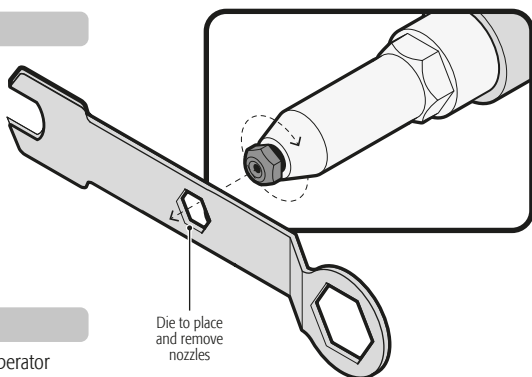
• Do not use tools and accessories with damaged or banged parts.



Assembly

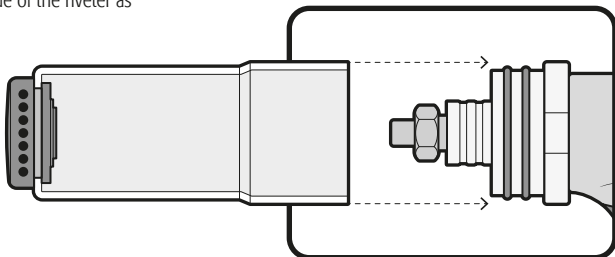
Nozzles Installation

- You can install in the riveter the nozzle that fits best the rivet stem diameter.
- Use the die to place and remove the nozzles included in the key.
- Double check the nozzle is tight before operating the riveter.



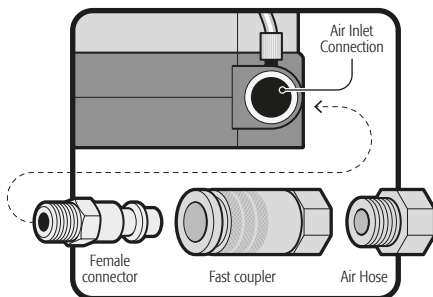
Installation of the nail container

- The nail container prevent the stems to hit the operator during the application.
- The stems are shot out the riveter rear side, through the adjusting knob orifice.
- Install the nail container is the rear side of the riveter as shown in the illustration.



Air Inlet Connection

- Connect the air hose to the tool with the adapters (not included), fixing the female connector to the air inlet connection.
- If using various pneumatic tools and only one compressor, a fast coupling (not included) is recommended, together with the adapter, to quickly connect and disconnect the tools and interchange them easily.



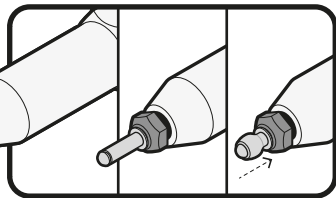
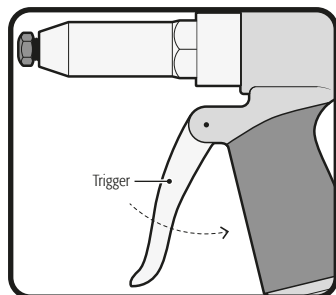
Lubrication

- Use an air line lubricant with SAE oil No. 10, set to two drops per minute. If an airline lubricant cannot be used, apply pneumatic engine oil to the entrance hole once a day.
- Put a drop of tool lubricant in the jaws every 5,000 cycles.

Turning ON

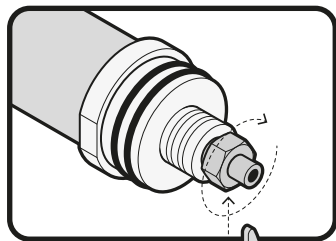
- Let some air run down the hose and the coupler to verify that both are clean before connecting them to the tool.
- Plug the tool into the air line.
- Turn ON the air compressor until is full.
- Regulate the compressor air outlet pressure, from 80 PSI, up to 100 PSI.

⚠ WARNING The tool operates in the pressure range mentioned above. If operating in a higher range, the service life of the machine will be shorter.



Operation

- Insert the rivet stem in the river nozzle.
- To hold the rivet in any position, see the section "Vacuum System".
- Find the orifice to put the rivet into and insert the rivet head in it.
- Hold firmly the riveter and press the trigger.
- Release the trigger and remove the riveter.



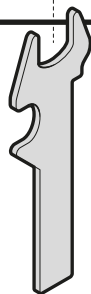
Vacuum System Adjustment

- To activate the vacuum system, turn the adjusting knob counterclockwise until getting the desired rivet fastening.

NOTE When activating the vacuum system, the air pressure lowers, therefore the working pressure needs adjusting. See the "Turning ON" section.

⚠ WARNING When not operating in the pressure range established, the riveter cannot separate the stem from the rivet.

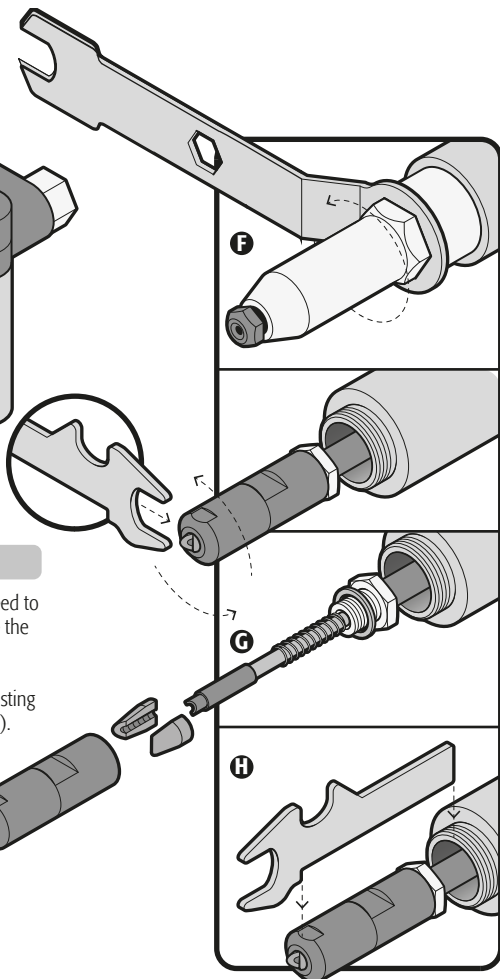
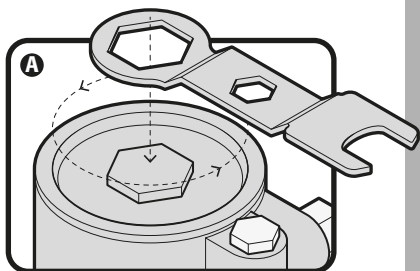
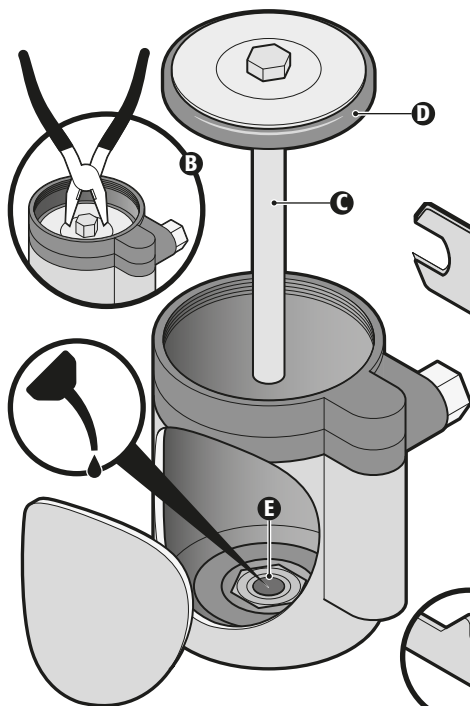
- To deactivate the vacuum system, turn the adjusting knob clockwise.



Cylinder

- Remove the cylinder cover (A).
- Remove the cylinder piston (B) using a wrench.
- Clean the inside, the piston shaft (C) and the ring (D).
- Add grease into the inner wall of the cylinder and ring.
- Fill the orifice where the piston shaft is inserted (E).


Use pneumatic engine oil (SAE No. 10) up to the washer first level. Set the piston back in place and close the cover. Tighten firmly using the wrench.




Riveter Chucks

- To carry out maintenance in the riveter chucks you need to remove them with the wrenches (F), then, disassemble the head parts (G).
- Clean all the pieces and apply lubricant.
- Assemble back the chuck. Using the wrench with adjusting limits to assure the head length is adequate: $2 \frac{13}{16}$ " (H). Otherwise, the riveter performance may be deficient.



Lubrication

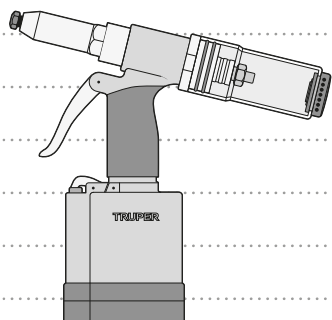
- Pneumatic tools require constant lubrication through the entire service life and when operating.
- Compressed air used for the tool contains humidity. It can rust the tool mechanism.
- To prevent this possibility, apply constantly lubricating oil using the  **TRUPER** Brand **UNI-LL-1/4**

Centralized Filter-Oil Feeder System install between the air compressor and the tool.

-  **WARNING** • Oil in excess is immediately ejected through the air flushing. Always keep the air flush free of obstructions. Never point it towards people or objects.
- When not using the tool for long periods of time, thoroughly careful lubrication is needed.
 - After each 60-hours operation, the tool mechanism need to be lightly greased. Grease in excess may lower the tool power.

Service

- Service the tools every 3 months only in a  **TRUPER** Authorized Service Center. Service and maintenance carried out by non-certified personnel may result dangerous and can cause personal injury and makes the product Warranty void.
- Tool malfunctioning due to failure to use the dose lubrication recommended, not following the instructions in this manual or repairs carried out by personnel not certified by  **TRUPER**®, is not covered in the Warranty. We reserve the right to make technical improvements with no previous notice.



In the event of any problem contacting a Truper Authorized Service Center, please see our webpage www.truper.com to get an updated list, or call our toll-free numbers **800 690-6990** or **800 0187-873** to get information about the nearest Service Center.

AGUASCALIENTES **DE TODO PARA LA CONSTRUCCIÓN**
GRAL. BARRAGÁN #1201, COL. GREMIAL, C.P. 20030,
AGUASCALIENTES, AGS. TEL.: 449 994 0537

BAJA CALIFORNIA **SUCURSAL TIJUANA**
AV. LA ENCANTADA, LOTE #5, PARQUE INDUSTRIAL EL
FLORIDO II, C.P. 2244, TIJUANA, B.C.
TEL.: 664 969 5100

BAJA CALIFORNIA SUR **FIX FERRETERÍAS**
FELIPE ÁNGELES ESQ. RUIZ CORTÍNEZ S/N, COL. PUEBLO
NUEVO, C.P. 23670, CD. CONSTITUCIÓN, B.C.S.
TEL.: 613 132 1115

CAMPECHE **TORNILLERÍA Y FERRETERÍA AAA**
AV. ÁLVARO OBREGÓN #324, COL. ESPERANZA
C.P. 24080 CAMPECHE, CAMP. TEL.: 981 815 2808

CHIAPAS **FIX FERRETERÍAS**
AV. CENTRAL SUR #27, COL. CENTRO, C.P. 30700,
TAPACHULA, CHIS. TEL.: 962 118 4083

CHIHUAHUA **SUCURSAL CHIHUAHUA**
AV. SILVESTRE TERRAZAS #128-11, PARQUE INDUSTRIAL
BAFAR, CARRETERA MÉXICO CUAUHTÉMOC, C.P. 31415,
CHIHUAHUA, CHIH. TEL.: 614 434 0052

CIUDAD DE MÉXICO **FIX FERRETERÍAS**
EL MONSTRUO DE CORREGIDORA, CORREGIDORA # 35,
COL. CENTRO, C.P. 06060, CUAUHTÉMOC, CDMX.
TEL.: 55 5522 5031 / 5522 4861

COAHUILA **SUCURSAL TORREÓN**
CALLE METAL MECÁNICA #280, PARQUE INDUSTRIAL
ORIENTE, C.P. 27278, TORREÓN, COAH.
TEL.: 871 209 68 23

COLIMA **BOMBAS Y MOTORES BYMTESA DE MANZANILLO**
BLVD. MIGUEL DE LA MADRID #190, COL. 16 DE
SEPTIEMBRE, C.P. 28239, MANZANILLO, COL.
TEL.: 314 332 1986 / 332 8013

DURANGO **TORNILLOS ÁGUILA, S.A. DE C.V.**
MAZURIO #200, COL. LUIS ECHEVERRÍA, DURANGO,
DGO. TEL.: 618 817 1946 / 618 818 2844

ESTADO DE MÉXICO **SUCURSAL CENTRO JILOTEPEC**
PARQUE INDUSTRIAL # 1, COL. PARQUE INDUSTRIAL
JILOTEPEC, JILOTEPEC, EDO. DE MÉX. C.P. 54257
TEL.: 761 782 9101 EXT. 5728 Y 5102

GUANAJUATO **CÍA. FERRETERA NUEVO MUNDO S.A. DE C.V.**
AV. MÉXICO - JAPÓN #225, CD. INDUSTRIAL, C.P. 38010,
CELAYA, GTO. TEL.: 461 617 7578 / 79 / 80 / 88

GUERRERO **CENTRO DE SERVICIO ECLIPSE**
CALLE PRINCIPAL MZ 1 LT. 1, COL. SANTA FE, C.P. 39010,
CHILPANCIÑO, GRO. TEL.: 747 478 5793

HIDALGO **FERREPRECIOS S.A. DE C.V.**
LIBERTAD ORIENTE #304 LOCAL 50, INTERIOR DE PASAJE
ROBLEDO, COL. CENTRO, C.P. 43600, TULANCINGO,
HGO. TEL.: 775 753 6615 / 775 753 6616

JALISCO **SUCURSAL GUADALAJARA**
AV. ADOLFO B. HORN # 6800, COL: SANTA CRUZ DEL
VALLE, C.P.: 45655, TLAJOMULCO DE ZUÑIGA, JAL.
TEL.: 33 3606 5285 AL 90

MICHOACÁN **FIX FERRETERÍAS**
AV. PASEO DE LA REPÚBLICA #3140-A, COL.
EX-HACIENDA DE LA HUERTA, C.P. 58050, MORELIA,
MICH. TEL.: 443 334 6858

MORELOS **FIX FERRETERÍAS**
CAPITÁN ANZÚRES #95, ESQ. JOSÉ PERDIZ, COL.
CENTRO, C.P. 62740, CUAUTLA, MOR.
TEL.: 735 352 8931

NAYARIT **HERRAMIENTAS DE TEPIC**
MAZATLAN #117, COL. CENTRO, C.P. 63000, TEPIC, NAY.
TEL.: 311 258 0540

NUEVO LEÓN **SUCURSAL MONTERREY**
CARRETERA LAREDO #300, 1B MONTERREY PARKS,
COLONIA PUERTA DE ANAHUAC, C.P. 66052, ESCOBEDO,
NUEVO LEÓN, TEL.: 81 8352 8791 / 81 8352 8790

OAXACA **FIX FERRETERÍAS**
AV. 20 DE NOVIEMBRE #910, COL. CENTRO, C.P. 68300,
TUXTEPEC, OAX. TEL.: 287 106 5092

PUEBLA **SUCURSAL PUEBLA**
AV. PERIFÉRICO #2-A, SAN LORENZO ALMECATLA,
C.P. 72710, CUAUHTLACINGO, PUE.
TEL.: 222 282 8282 / 84 / 85 / 86

QUERÉTARO **ARU HERRAMIENTAS S.A. DE C.V.**
AV. PUERTO DE VERACRUZ #110, COL. RANCHO DE
ENMEDIO, C.P. 76842, SAN JUAN DEL RÍO, QRO.
TEL.: 427 268 4544

QUINTANA ROO **FIX FERRETERÍAS**
CARRETERA FEDERAL MZ. 46 LT. 3 LOCAL 2, COL. EJIDAL,
C.P. 77710 PLAYA DEL CARMEN, Q.R.
TEL.: 984 267 3140

SAN LUIS POTOSÍ **FIX FERRETERÍAS**
AV. UNIVERSIDAD #1850, COL. EL PASEO, C.P. 78320,
SAN LUIS POTOSÍ, S.L.P. TEL.: 444 822 4341

SINALOA **SUCURSAL CULIACÁN**
AV. JESÚS KUMATE SUR #4301, COL. HACIENDA DE LA
MORA, C.P. 80143, CULIACÁN, SIN.
TEL.: 667 173 9139 / 173 8400

SONORA **FIX FERRETERÍAS**
CALLE 5 DE FEBRERO #517, SUR LT. 25 MZ. 10, COL.
CENTRO, C.P. 85000, CD. OBREGÓN, SON.
TEL.: 644 413 2392


TABASCO **SUCURSAL VILLAHERMOSA**
CALLE HELIO LOTES 1, 2 Y 3 MZ. #1, COL. INDUSTRIAL,
2A ETAPA, C.P. 86010, VILLAHERMOSA, TAB.
TEL.: 993 353 7244

TAMAULIPAS **VM ORINGS Y REFACCIONES**
CALLE ROSITA #527 ENTRE 20 DE NOVIEMBRE Y GRAL.
RODRÍGUEZ, FRACC. REYNOSA, C.P. 88780, REYNOSA,
TAMS. TEL.: 899 926 7552

TLAXCALA **SERVICIOS Y HERRAMIENTAS INDUSTRIALES**
PABLO SIDAR #132, COL. BARRIO DE SAN BARTOLOMÉ,
C.P. 90970, SAN PABLO DEL MONTE, TLAX.
TEL.: 222 271 7502

VERACRUZ **LA CASA DISTRIBUIDORA TRUPER**
BLVD. PRIMAVERA ESQ. HORTENSIA S/N, COL.
PRIMAVERA C.P. 93308, POZA RICA, VER.
TEL.: 782 823 8100 / 826 8484

YUCATÁN **SUCURSAL MÉRIDA**
CALLE 33 #600 Y 602, LOCALIDAD ITZINCAB Y MULSA,
MPIO. UMAN, C.P. 97390, MÉRIDA, YUC.
TEL.: 999 912 2451

Code	Model	Brand
101896	TPN-883-2	 TRUPER®

Warranty. Duration: 2 year. Coverage: parts, components and workmanship against manufacturing or operating defects, except if used under conditions other than normal; when it was not operated in accordance with the instructive; was altered or repaired by personnel not authorized by **Truper®**. To make the warranty valid, present the product, stamped policy or invoice or receipt or voucher, in the establishment where you bought it or in Corregidora 35, Centro, Cuauhtémoc, CDMX, 06060, where you can also purchase parts, components, consumables and accessories. It includes the costs of transportation of the product that derive from its fulfillment of its service network. . Phone number **800-018-7873**. Made in China. Imported by Truper, S.A. de C.V. Parque Industrial 1, Parque Industrial Jilotepec, Jilotepec, Edo. de Méx. C.P. 54257, Phone number 761 782 9100.



Stamp of the business. Delivery date: