

ENGLISH  
ESPAÑOL

# TRUPER®

Manual

## Canister vacuum

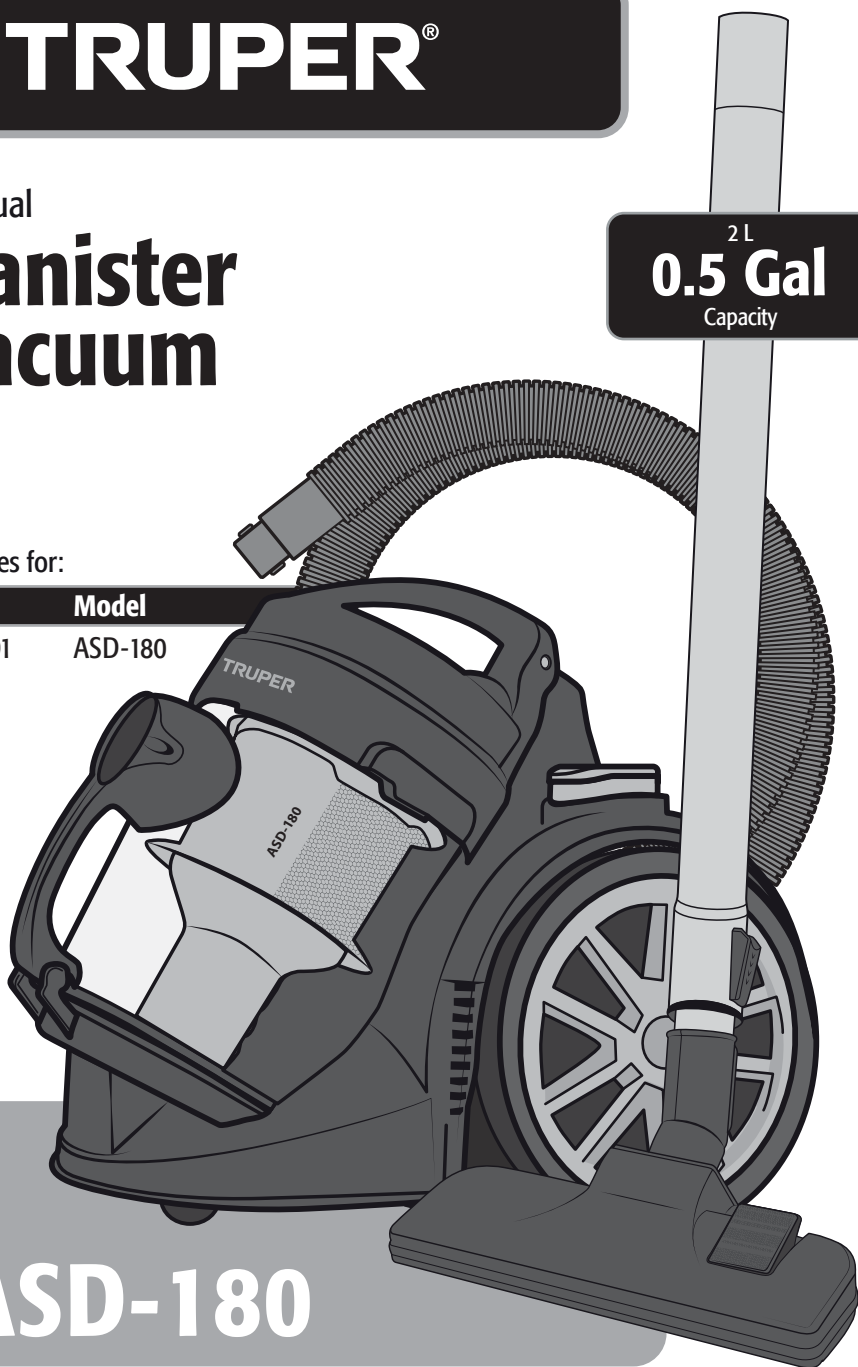
Applies for:

**Code**

**Model**

103191

ASD-180



## ASD-180



**CAUTION**



Read this manual thoroughly  
before using the tool.





Technical data.....	3
Power requirements.....	3
! General safety warnings for electric tools.....	4
! Safety warnings for the use of vacuum cleaners.....	5
Parts.....	6
Assembly.....	6
Start Up.....	7
Maintenance.....	8
Troubleshooting.....	10
Authorized service centers.....	11
Warranty policy.....	12

**! CAUTION**

To get the most out of the tool, extend its lifespan, claim the warranty if necessary, and avoid serious risks or injuries, please read this manual thoroughly before using the tool.

Please keep this manual for future references.

The illustrations in this manual are for reference only and may differ from the real appearance of the tool.





## ASD-180

Code	•	103191
Description	•	Canister vacuum
Voltage	•	127 V~
Frequency	•	60 Hz
Current	•	10 A
Rated power	•	1 200 W (1.6 Hp)
Capacity	•	0.5 gal (2 L)
Vacuum pressure	•	17 kPa (2.5 PSI)
Conductors	•	18 AWG x 2 C
Insulation	•	Class II
		IP grade • IPX0

The power cable has cable ties type: Y  
 The construction class of the tool is: Reinforced insulation  
 The thermal insulation class of the motor windings: Class B

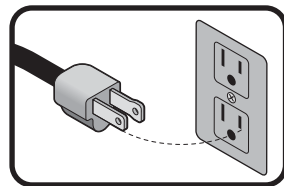
**⚠ WARNING** If the power cable is damaged, it must be replaced by the manufacturer or a TRUPER Authorized Service Center to prevent any risk of electric shock or significant accidents. The electrical insulation of this tool is altered by splashes or spillage of liquids during its operation. Do not expose it to rain, liquids, and/or moisture.



**⚠ WARNING** Before accessing the terminals, all power circuits must be disconnected.

## Power requirements

**⚠ WARNING** Tools with reinforced insulation are equipped with a polarized plug (one prong is wider than the other). This plug fits into any polarized outlet and can only be connected in one way. If the plug does not fit into the outlet, turn it over. If it still does not fit, contact a qualified electrician or install a polarized outlet. Do not alter the plug in any way. Double-insulation tools eliminate the need for a 3-wire grounded power cord or a grounded electrical system.



**⚠ WARNING** When using an extension cord, ensure to use a gauge to carry the current that the tool will consume. A lower gauge cord will cause voltage drops in the line, resulting in power loss and motor overheating. The following table shows the correct size to be used depending on the cable length and the amperage capacity indicated on the tool's data plate. If in doubt, use the next higher gauge.

Capacity in amperes	Number of conductors	Extension gauge	
		From 1.8 m to 15 m	Greater than 15 m
From 0 A to 10 A	3 (one to ground)	18 AWG(*)	16 AWG
From 10 A to 13 A		16 AWG	14 AWG
From 13 A to 15 A		14 AWG	12 AWG
From 15 A to 20 A		8 AWG	6 AWG

\* It is allowed to use it if the extensions themselves have an overcurrent protection device.

AWG = American Wire Gauge. Reference: NMX-J-195-ANCE.

**⚠ WARNING** When operating electric tools outdoors, use a **volteck** grounded extension cord marked as 'Outdoor Use'. These extensions are specially designed for outdoor use and reduce the risk of electric shock.





## General safety warnings for electric tools



**⚠ WARNING! Read all safety warnings and all instructions listed below carefully.** Failure to follow any of them may result in electric shock, fire, and/or serious injury. **Keep the warnings and instructions for future reference.**

### Work area

Keep your work area clean and well-lit.



Cluttered and dim areas can lead to accidents.

Do not operate the tool in explosive atmospheres, such as in the presence of flammable liquids, gas, or dust.



The electric tools produce sparks that can ignite flammable material.

Keep children and other individuals at a safe distance while using the equipment.



Distractions can cause loss of control and lead to accidents.

### Electrical safety

Electrical tool plugs must match the outlet. Never modify the plug in any way. Do not use adapters with grounded electrical tools.



Unmodified electrical tools and matching plugs will reduce the risk of electric shock.

Avoid bodily contact with grounded surfaces, such as pipes, radiators, stoves, and refrigerators.

There is an increased risk of electric shock if your body is grounded.

Do not expose the tool to rain or humid conditions.

Water entering the tool increases the risk of electric shock.

Do not force the cable. Never use the cable for carrying, lifting, or disconnecting the tool. Keep the cable away from heat, oil, sharp edges, or moving parts.

Damaged or tangled cables increase the risk of electric shock.

When operating an electrical tool outdoors, use an extension cord suitable for outdoor use.

The use of a suitable outdoor-rated cable reduces the risk of electric shock.

If it is unavoidable to operate an electrical tool in a damp location, use a power source protected by a Ground Fault Circuit Interrupter (GFCI).

The use of a Ground Fault Circuit Interrupter (GFCI) reduces the risk of electric shock.

### Personal safety

Be alert, watch what you are doing, and use common sense when handling a tool. Do not use it if you are tired or under the influence of drugs, alcohol, or medication.

A moment of distraction while using the tool can cause personal injury.

Use safety equipment. Always wear eye protection.

The use of safety equipment such as safety glasses, dust mask, slip-resistant shoes, helmet, and ear protection in appropriate conditions significantly reduces the risk of personal injury.



Avoid accidental starts. Ensure the switch is in the "off" position before connecting to the power source and/or the battery or transporting the tool.

Carrying power tools with your finger on the switch or connecting power tools with the switch in the "on" position can cause accidents.

Remove any wrenches or adjusting tools before starting the power tool.

Wrenches or tools left on the rotating parts of the tool can cause personal injury.

Do not exceed your range of motion. Keep both feet firmly planted on the ground and always maintain balance.

This allows better control of the tool in unexpected situations.

Dress appropriately. Do not wear loose clothing or jewelry. Keep your hair, clothing, and gloves away from moving parts.



Loose clothes, jewelry, or long hair can get caught in moving parts.

If dust extraction and collection devices are available for the tool, check their connections and use them correctly.

The use of these devices reduces risks associated with dust.

### Tool use and care

Do not force the tool. Use the appropriate tool for the task at hand.



The right tool performs better and is safer when used at the intended pace.

Do not use the tool if the switch is not functioning.

Any power tool that cannot be turned on or off is dangerous and must be repaired before operation.

Disconnect the tool from the power source and/or battery before making any adjustments, changing accessories, or storing it.

These measures reduce the risk of accidentally starting the tool.

Store the tools out of the reach of children and do not allow them to be handled by individuals unfamiliar with the tools or their instructions.



Power tools are dangerous in untrained hands.

Maintain the tool. Ensure that the moving parts are not misaligned or jammed, and that there are no broken parts or other conditions that may affect its operation. Repair any damage before using the tool.



Many accidents are caused by inadequate tool maintenance.

Use the tool, its components, and accessories in accordance with these instructions and as intended for the type of tool, in appropriate working conditions.

Using the tool for applications other than those for which it is designed could cause a hazardous situation.

### Service

Repair the tool at an Authorized TRUPER Service Center using only identical replacement parts.

To maintain the safety of the tool.

This appliance is not intended for use by persons (including children) with reduced physical, sensory, or mental capabilities, or lack of experience and knowledge, unless they have been given supervision or instruction concerning the use of the appliance by a person responsible for their safety.

Children should be supervised to ensure that they do not play with the appliance. Strict supervision should be applied with children or disabled individuals to prevent them from using or being near any household tool.



This tool is in compliance with the Official Mexican Standard (NOM - Norma Oficial Mexicana).



# Safety warnings



for the use of vacuum cleaners



# TRUPER®

## Hazardous materials

**⚠ WARNING** • Do not vacuum or use the vacuum cleaner near flammable liquids, gases, or explosive vapors such as gasoline or other fuels, lighter fluid, hot liquids, cleaners, oil-based paints, natural gas, hydrogen, or explosive powders such as coal dust, magnesium dust, grain dust, or gunpowder. Sparks inside the motor can ignite flammable vapors or powders.

**⚠ WARNING** • Do not vacuum anything that is burning or producing smoke, such as cigarettes, matches or hot ashes.

**⚠ CAUTION** • Do not vacuum masonry dust or chimney soot, as it is very fine dust and will not be trapped by the filter causing damage to the motor. When vacuuming fine dust, use a special dust filter (sold separately).

## Cable



- Do not pull the vacuum cleaner or move it with the cord, do not use the cord as a handle, do not close doors on the cord, do not pass the cord over sharp edges or corners.
- Keep the cord away from hot surfaces.
- Do not unplug the vacuum cleaner by pulling the cord. To unplug, grasp the plug, not the cord.
- Do not use the vacuum cleaner with a damaged cord or plug.
- Do not vacuum over the cord.
- Do not handle the plug or vacuum cleaner with wet hands.
- To reduce the risk of injury from accidental starts, disconnect the power cord before changing or cleaning the filter.

## While operating the vacuum cleaner

**⚠ WARNING** • Do not vacuum liquids.

**⚠ CAUTION** • Keep hair, loose clothing, fingers, and any other body parts away from openings and moving parts.

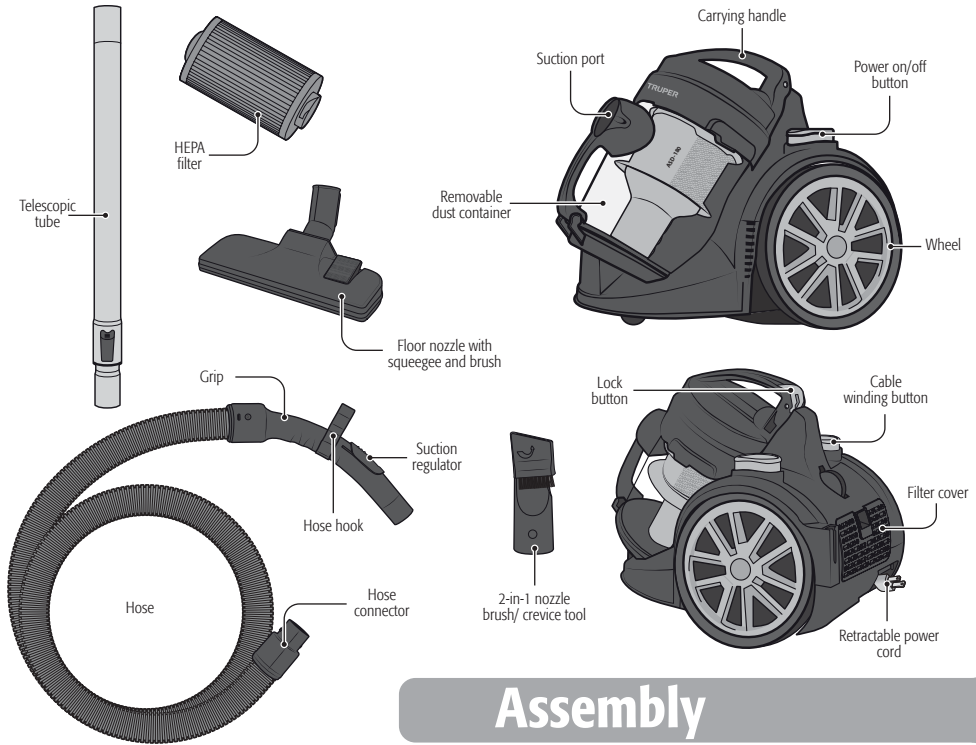
- Do not use or store near hazardous materials.
- Do not leave the vacuum cleaner unattended when operating.
- Do not leave the vacuum cleaner unattended when plugged in.
- Do not place any object on the ventilation openings.
- Do not operate the vacuum cleaner with blocked ventilation openings; keep them free of dust, lint, hair or anything else that may restrict airflow.
- Do not use the vacuum cleaner with a broken or missing filter.
- To reduce the risk of falls, use extreme caution when cleaning stairs.
- If the vacuum cleaner is not working properly, is missing parts, has been dropped or damaged, has been left outdoors or dropped into water, take it to an Authorized TRUPER Service Center.
- Turn off the vacuum cleaner before unplugging it.
- Unplug it from the power outlet when not in use or before servicing.
- Do not allow it to be used as a toy. Particular attention should be paid when children use it or are nearby.
- Do not expose the vacuum cleaner to rain. Store indoors.
- Use ear protection when performing services with noise levels exceeding 85 dB.



**⚠ WARNING** This appliance is not intended for use by persons (including children) with reduced physical, sensory, or mental capabilities, or lack of experience and knowledge, unless they have been given supervision or instruction concerning the use of the appliance by a person responsible for their safety.

**⚠ CAUTION** Children should be supervised to ensure that they do not play with the appliance. Strict supervision should be applied with children or disabled individuals to prevent them from using or being near any household tool.





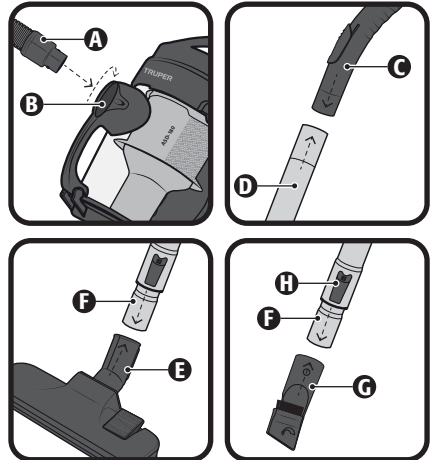
## Assembly

- Insert the hose connector (A) into the suction port (B). Ensure proper alignment of the notches. Rotate the hose clockwise to secure it to the machine.
- Insert the handle (C) into the wider end of the telescopic tube (D).
- Select the accessory according to the type of vacuuming you wish to perform and insert it into the free end of the telescopic tube.

**CAUTION** Press the latch (H) and pull the telescopic tube to extend it.

**NOTE** The 2-in-1 nozzle brush/crevice tool nozzle (G) has dual functionality:

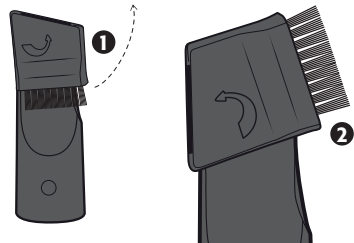
1. Crevice tool nozzle for tight spaces.
2. Round brush for sofas, bookshelves, curtains, and furniture. Use this accessory to reach hard-to-access corners.



Crevice tool use:

Brush use:

2-in-1 nozzle  
brush/crevice tool

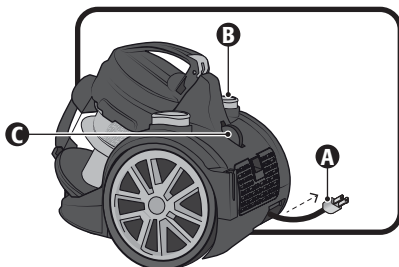




## On and off

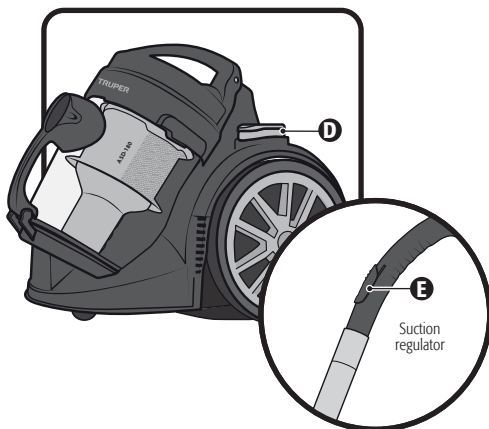
- To pull out the cable to the desired length **(A)**.
- Press the power on/off button to turn on the vacuum cleaner **(B)**.
- When cleaning is done, disconnect the plug from the power outlet and lightly press the power cord rewind button **(D)**.

**⚠ CAUTION** • Always ensure that the switch is in the OFF position before plugging the cable into the power outlet.



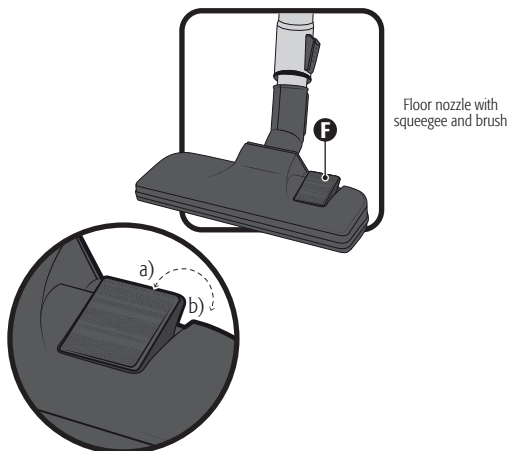
## Usage of the vacuum cleaner

- Ensure that the dust container and motor filters are correctly placed.
- You can adjust the airflow with the suction regulator located on the handle **(E)**; slide it up or down.
- If the dust compartment is full, remove it and empty the content (page 8).



## Accessories

- To achieve greater cleaning efficiency, always keep the accessories clean.
- Before using the floor nozzle with squeegee and brush, ensure that the button position **(F)** matches the type of surface to be cleaned:
  - a) Lower the brush to vacuum floors.
  - b) Use it without the brush to vacuum carpets.
- Use the suction regulator **(E)** to quickly reduce suction power; this is recommended when vacuuming delicate surfaces and objects.
- With the 2-in-1 nozzle brush/crevice tool, you will reach difficult-to-access corners. Use the tool for sofas, bookshelves, curtains, and furniture.





## HEPA filter cleaning

- The HEPA filter is located inside the dust compartment.

1. Empty the dust container following the instructions on page 9.
2. Turn the transparent container cup until the arrow lines up with the unlocked lock symbol.
3. Twist the filter cover clockwise and pull to remove it from the lid.
4. Twist the filter clockwise and pull downward.
5. Wash it with cold water and let it dry for 24 hours.

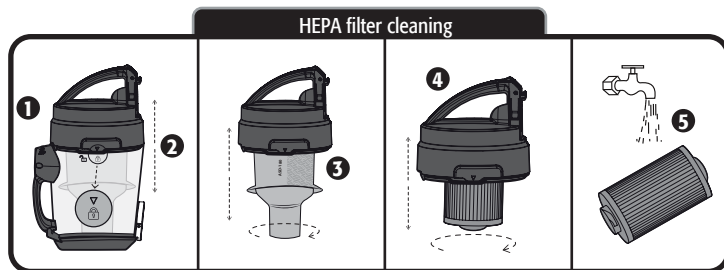
**⚠ CAUTION** Ensure the filter is completely dry before reinstalling it.

**⚠ CAUTION** If the filters are broken or worn out, replace them immediately.

**⚠ WARNING** To prevent a reduction in machine suction, reinstall the components carefully without damaging the container seals.

## Transportation and storage

- To transport the vacuum cleaner, you can lift it with the handle. The vacuum cleaner has accessory storage.
- For storage, place the combined floors/carpet accessory in the rear or bottom slot of the vacuum cleaner.
- For vertical storage, place the fixing support in the hole of the body.
- The vacuum cleaner should be stored in enclosed areas.



# Maintenance

This vacuum cleaner is intended for household use only and not for commercial purposes. The manufacturer does not assume responsibility for any damage that may occur due to improper use or handling.

## Cleaning

- Remove the hose after each use.
- Always keep the ventilation openings free and clean. Blow regularly with compressed air or clean with a brush.
- To maintain the appearance of the vacuum cleaner, clean the exterior with a damp cloth and mild soap.

## Filter care

- The included sponge and HEPA filters are made of high-quality materials designed to trap small dust particles.
- To collect dust, filters must be dry. If they are wet, the filters will quickly become clogged, making cleaning very difficult.

- Handle the filters carefully when removing them for cleaning or replacement. Check for tears; a small hole can allow dust to pass through the equipment. Do not use filters with tears or holes, replace them immediately.
- When the filters are clearly covered in dust or suction decreases significantly, clean them promptly, this can improve work efficiency and extend the vacuum cleaner's lifespan.
- Never use the machine without filters.



## Service

- Tool servicing should only be performed at an Authorized TRUPER Service Center. Service and maintenance performed by unqualified persons can be dangerous and may cause personal injury as well as voiding the product warranty.
- When servicing a vacuum cleaner, request the use of genuine replacement parts. The use of unauthorized parts, or failure to provide proper maintenance, can pose a risk of electric shock or injury.

## Carbon brush replacement

- Carbon brushes should be periodically inspected and always replaced by an Authorized TRUPER Service Center when worn out.
- After replacement, request an inspection to ensure the new carbon brushes can move freely in the brush holder and ask for the tool to be turned on for 5 minutes to pair the contact of the brushes and the switch.
- Only genuine TRUPER brand replacement carbon brushes should be used, specifically designed with the appropriate hardness and electrical resistance for each type of motor. Out-of-specification carbon brushes can damage the motor.
- Whenever carbon brush replacement is required, both carbon brushes must be replaced.

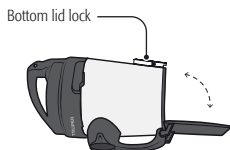
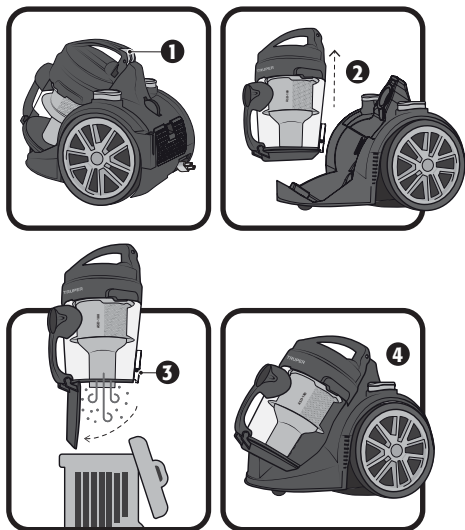
## Dust compartment cleaning

**CAUTION** • This machine is designed with cyclonic technology and does not use a dust bag filter.

- Always keep the dust compartment clean before each operation.
- If necessary, the dust compartment can be washed with water and soap.

1. Press the lock button.
2. Hold the handle and push forward to remove the dust compartment.
3. Press the bottom lid lock to empty the dust from the container.
4. Close the lower lid and properly place the dustbin back in position, ensuring the button is locked.

**CAUTION** When you notice a decrease in suction power, check if the dust compartment is full and empty it.



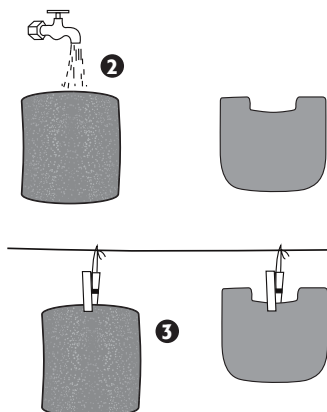
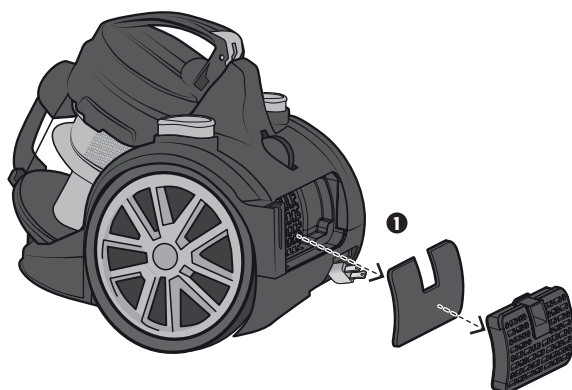


## Sponge filter cleaning

1. Press the lock button and pull the cover to remove it from the vacuum cleaner. Lift the sponge filter with your fingers to separate it from the cover.
2. Wash it with a mild soap and water solution and rinse it with clean water.
3. Let the filter air dry outdoors for 24 hours before reinstalling it back into the cage.
4. Reinstall the filter. Push the cover until you hear the locking latch click.

**⚠ CAUTION** Before cleaning the filter, tap it gently to remove larger debris.

**⚠ CAUTION** The filter cleaning process should be done outdoors, never in inhabited areas.



## Troubleshooting

### Problem

### Cause

### Corrective action

The vacuum cleaner is not working.

- No power.
- Defective cable.
- The dust compartment is full.

- Check the power supply, cable, circuit breakers, and fuses.
- Unplug and check the power cable. If damaged, it should be repaired at an Authorized TRUPER Service Center.
- Empty and clean the dust compartment.

Dust is expelled from the motor cover.

- One of the filters is not placed or is incorrectly placed.

- Place or replace the filters.

Reduced motor/speed efficiency and vibration.

- Nozzle, hose, or container inlet blockage.
- Clogged filters due to fine dust presence.

- Check the nozzle, hose, and container inlet for any blockages.
- Remove the filters and clean them or install new ones.
- Check the hose pressure regulator position.



In the event of any problem contacting an Authorized Truper Service Center, please see our webpage **WWW.TRUPER.COM** to get an updated list, or call our toll-free numbers **800 690-6990** or **800 0187-873** to get information about the nearest Service Center.

**AGUASCALIENTES** **DE TODO PARA LA CONSTRUCCIÓN**  
GRAL. BARRAGÁN #1201, COL. GREMIAL, C.P. 20030,  
AGUASCALIENTES, AGS. TEL.: 449 994 0537

**BAJA CALIFORNIA** **SUCURSAL TIJUANA**  
AV. LA ENCANTADA, LOTE #5, PARQUE INDUSTRIAL EL  
FLORIDO II, C.P. 22244, TIJUANA, B.C.  
TEL.: 664 969 5100

**BAJA CALIFORNIA SUR** **FIX FERRETERÍAS**  
FELIPE ANGELES ESQ. RUIZ CORTÍNEZ S/N, COL. PUEBLO  
NUEVO, C.P. 23670, CD. CONSTITUCIÓN, B.C.S.  
TEL.: 613 132 1115

**CAMPECHE** **TORNILLERÍA Y FERRETERÍA AAA**  
AV. ALVARO OBREGÓN #324, COL. ESPERANZA  
C.P. 24080 CAMPECHE, CAMP. TEL.: 981 815 2808

**CHIAPAS** **FIX FERRETERÍAS**  
AV. CENTRAL SUR #27, COL. CENTRO, C.P. 30700,  
TAPACHULA, CHIS. TEL.: 962 118 4083

**CHIHUAHUA** **SUCURSAL CHIHUAHUA**  
AV. SILVESTRE TERRAZAS #128-11, PARQUE INDUSTRIAL  
BAFAR, CARRETERA MÉXICO CUAUHTÉMOC, C.P. 31415,  
CHIHUAHUA, CHIH. TEL.: 614 434 0052

**CIUDAD DE MÉXICO** **FIX FERRETERÍAS**  
EL MONSTRUO DE CORREGIDORA, CORREGIDORA # 35,  
COL. CENTRO, C.P. 06060, CUAUHTÉMOC, CDMX.  
TEL.: 55 5522 5031 / 5522 4861

**COAHUILA** **SUCURSAL TORREÓN**  
CALLE METAL MECÁNICA #280, PARQUE INDUSTRIAL  
ORIENTE, C.P. 27278, TORREÓN, COAH.  
TEL.: 871 209 68 23

**COLIMA** **BOMBAS Y MOTORES BYMTESA DE MANZANILLO**  
BLVD. MIGUEL DE LA MADRID #190, COL. 16 DE  
SEPTIEMBRE, C.P. 28239, MANZANILLO, COL.  
TEL.: 314 332 1986 / 332 8013

**DURANGO** **TORNILLOS ÁGUILA, S.A. DE C.V.**  
MAZURIO #200, COL. LUIS ECHEVERRÍA, DURANGO,  
DGO. TEL.: 618 817 1946 / 618 818 2844

**ESTADO DE MÉXICO** **SUCURSAL CENTRO JILOTEPEC**  
PARQUE INDUSTRIAL # 1, COL. PARQUE INDUSTRIAL  
JILOTEPEC, JILOTEPEC, EDO. DE MÉX. C.P. 54257  
TEL.: 761 782 9101 EXT. 5728 Y 5102

**GUANAJUATO** **CÍA. FERRETERA NUEVO MUNDO S.A. DE C.V.**  
AV. MÉXICO - JAPÓN #225, CD. INDUSTRIAL, C.P. 38010,  
CELAYA, GTO. TEL.: 461 617 7578 / 79 / 80 / 88

**GUERRERO** **CENTRO DE SERVICIO ECLIPSE**  
CALLE PRINCIPAL MZ.1 LT. 1, COL. SANTA FE, C.P. 39010,  
CHILPANCINGO, GRO. TEL.: 747 478 5793

**HIDALGO** **FERREPRECIOS S.A. DE C.V.**  
LIBERTAD ORIENTE #304 LOCAL 30, INTERIOR DE PASAJE  
ROBLEDO, COL. CENTRO, C.P. 43600, TULANCINGO,  
HGO. TEL.: 775 753 6615 / 775 753 6616

**JALISCO** **SUCURSAL GUADALAJARA**  
AV. ADOLFO B. HORN # 6800, COL. SANTA CRUZ DEL  
VALLE, C.P.: 45655, TLAJOMULCO DE ZUNIGA, JAL.  
TEL.: 33 3606 5285 AL 90

**MICHOACÁN** **FIX FERRETERÍAS**  
AV. PASEO DE LA REPÚBLICA #3140-A, COL.  
EX-HACIENDA DE LA HUERTA, C.P. 58050, MORELIA,  
MICH. TEL.: 443 334 6858

**MORELOS** **FIX FERRETERÍAS**  
CAPITÁN ANZURES #95, ESQ. JOSÉ PERDIZ, COL.  
CENTRO, C.P. 62740, CUAUTLA, MOR.  
TEL.: 735 352 8931

**NAVARRIT** **HERRAMIENTAS DE TEPIC**  
MAZATLAN #117, COL. CENTRO, C.P. 63000, TEPIC, NAY.  
TEL.: 311 258 0540

**NUEVO LEÓN** **SUCURSAL MONTERREY**  
CARRETERA LAREDO #300, 1B MONTERREY PARKS,  
COLONIA PUERTA DE ANÁHUAC, C.P. 66052, ESCOBEDO,  
NUEVO LEÓN, TEL.: 81 8352 8791 / 81 8352 8790

**OAXACA** **FIX FERRETERÍAS**  
AV. 20 DE NOVIEMBRE #910, COL. CENTRO, C.P. 68300,  
TUXTEPEC, OAX. TEL.: 287 106 3092

**PUEBLA** **SUCURSAL PUEBLA**  
AV. PERIFÉRICO #2-A, SAN LORENZO ALMECATLA,  
C.P. 72710, CUAUHTLACINO, PUE.  
TEL.: 222 282 8282 / 84 / 85 / 86

**QUERÉTARO** **ARU HERRAMIENTAS S.A. DE C.V.**  
AV. PUERTO DE VERACRUZ #110, COL. RANCHO DE  
ENMEDIO, C.P. 76842, SAN JUAN DEL RÍO, QRO.  
TEL.: 427 268 4544

**QUINTANA ROO** **FIX FERRETERÍAS**  
CARRETERA FEDERAL MZ. 46 LT. 3 LOCAL 2, COL. EJIDAL,  
C.P. 77710 PLAYA DEL CARMEN, Q.R.  
TEL.: 984 267 3140

**SAN LUIS POTOSÍ** **FIX FERRETERÍAS**  
AV. UNIVERSIDAD #1850, COL. EL PASEO, C.P. 78320,  
SAN LUIS POTOSÍ, S.L.P. TEL.: 444 822 4341

**SINALOA** **SUCURSAL CULIACÁN**  
AV. JESÚS KUMATE SUR #4301, COL. HACIENDA DE LA  
MORA, C.P. 80143, CULIACÁN, SIN.  
TEL.: 667 173 9139 / 173 8400

**SONORA** **FIX FERRETERÍAS**  
CALLE 5 DE FEBRERO #517, SUR LT. 25 MZ. 10, COL.  
CENTRO, C.P. 85000, CD. OBREGÓN, SON.  
TEL.: 644 413 2392

**TABASCO** **SUCURSAL VILLAHERMOSA**  
CALLE HELIO LOTES 1, 2 Y 3 MZ. #1, COL. INDUSTRIAL,  
2A ETAPA, C.P. 86010, VILLAHERMOSA, TAB.  
TEL.: 993 353 7244

**TAMAULIPAS** **VM ORINGS Y REFACCIONES**  
CALLE ROSITA #527 ENTRE 20 DE NOVIEMBRE Y GRAL.  
RODRÍGUEZ, FRACC. REYNOSA, C.P. 88780, REYNOSA,  
TAMS. TEL.: 899 926 7552

**TLAXCALA** **SERVICIOS Y HERRAMIENTAS INDUSTRIALES**  
PABLO SIDAR #132, COL. BARRIO DE SAN BARTOLOMÉ,  
C.P. 90970, SAN PABLO DEL MONTE, TLAX.  
TEL.: 222 271 7502

**VERACRUZ** **LA CASA DISTRIBUIDORA TRUPER**  
BLVD. PRIMAVERA, ESQ. HORTENSIA S/N, COL.  
PRIMAVERA C.P. 93308, POZA RICA, VER.  
TEL.: 782 823 8100 / 826 8484

**YUCATÁN** **SUCURSAL MÉRIDA**  
CALLE 33 #600 Y 602, LOCALIDAD ITZINCAB Y Mulsay,  
MPIO. UMAN, C.P. 97390, MÉRIDA, YUC.  
TEL.: 999 912 2451



Code	Model	Brand
103191	ASD-180	TRUPER®

**Warranty.** Duration: 1 year. Coverage: parts, components, and labor against manufacturing or operational defects, except when used under conditions other than normal, not operated according to the instructions, altered, or repaired by unauthorized personnel not authorized by TRUPER. To enforce the warranty, present the product, sealed policy, invoice, or receipt, at the establishment where you purchased it or at Corregidora 35, Centro, Cuauhtémoc, CDMX, 06060, where you can also purchase parts, components, consumables, and accessories. It includes transportation expenses for the product resulting from its service network compliance. Tel. **800-018-7873**. Made in/Hecho en China. Importer **TRUPER, S.A. de C.V.** Parque Industrial 1, Parque Industrial Jilotepec, Jilotepec, Edo. de Méx. C.P. 54257, Tel. 761 782 9100.

Stamp of the business. Delivery date:

