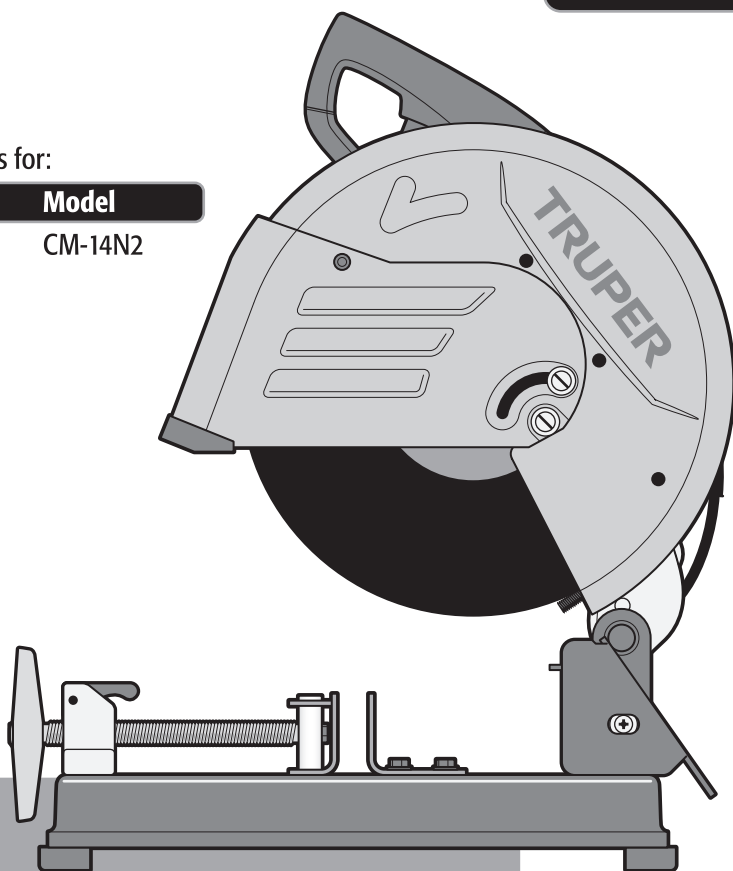


Manual Cut off saw

3 Hp

Applies for:

Code	Model
17733	CM-14N2





CM-14N2

CAUTION



Read the user's manual thoroughly
before operating this tool.



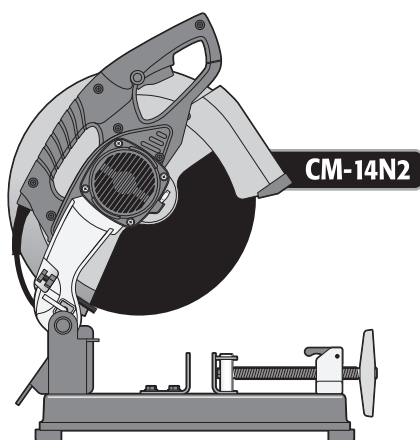
Technical data	3
Power requirements	3
 General power tool safety warnings	4
 Safety warnings for cut off saws	5
Parts	6
Start up	7
Cutting capabilities	9
Operation	9
Maintenance	10
Authorized service centers	11
Warranty policy	12

CAUTION

To gain the best performance of the tool, prolong the duty life, make the Warranty valid if necessary and to avoid hazards of fatal injuries please read and understand this Manual before using the tool.

Keep this manual for future references.

The illustrations in this manual are for reference only. They might be different from the real tool.



Technical data

TRUPER
INDUSTRIAL

CM-14N2

Code •	17733		
Description •	Cut off saw		
Disc Diameter •	14"		
Voltage •	127 V~		
Frequency •	60 Hz		
Current •	17.3 A		
Power •	3 Hp		
Speed •	4 200 RPM	Spindle •	1"
Duty Cycle •	50 minutes work per 20 minutes idle. Maximum 6 hours per day.		
Conductors •	14 AWG x 2C with insulating temperature of 167 °F		
Insulation •	Class II	IP Grade •	IP20

Power Cord Grips used in this product: Type "Y".
Tool Build Quality: Reinforced Insulation
Thermal insulation on motor winding: Class E

⚠ WARNING Avoid the risk of electric shock or severe injury. When the power cable gets damaged it should only be replaced by the manufacturer or at a **TRUPER** Authorized Service Center. The build quality of the electric insulation is altered if spills or liquid gets into the tool while in use. Do not expose to rain, liquids and/or dampness.

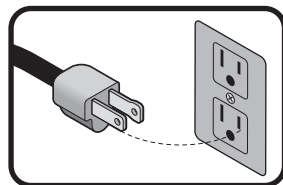
⚠ WARNING Before gaining access to the terminals all power sources should be disconnected.



Power requirements

⚠ WARNING Tools with double insulation and reinforced insulation are equipped with a polarized plug (one prong is wider than the other). This plug will only fit in the right way into a polarized outlet. If the plug cannot be introduced into the outlet, reverse the plug. If it still doesn't fit, call a qualified electrician to install for you a polarized outlet. Do not alter the plug in any way. Both insulation types eliminate the need of both a grounded third power cord with three prongs or a grounded power connection.

⚠ WARNING When using an extension cable, verify the gauge is enough for the power that your product needs. A lower gauge cable will cause voltage drop in the line, resulting in power loss and overheating. The following table shows the right size to use depending on cable's length and the ampere capability shown in the tool's nameplate. When in doubt use the next higher gauge.



Ampere Capacity	Number of Conductors	Extension gauge	
		from 5.9' to 49.2'	higher than 49.2'
from 0 A and up to 10 A	3 (one grounded)	18 AWG(*)	16 AWG
from 10 A and up to 13 A		16 AWG	14 AWG
from 13 A and up to 15 A		14 AWG	12 AWG
from 15 A and up to 20 A		8 AWG	6 AWG

* It is safe to use only if the extensions have a built-in artifact for over current protection.

AWG = American Wire Gauge. Reference: NMX-J-195-ANCE

⚠ WARNING When operating power tools outdoors, use a **VOLTECK** grounded extension cable labeled "For Outdoors Use". These extensions are specially designed for operating outdoors and reduce the risk of electric shock.





General power tool safety warnings



⚠ WARNING! Read carefully all safety warnings and instruction listed below. Failure to comply with any of these warnings may result in electric shock, fire and / or severe damage. **Save all warnings and instructions for future references.**

Work area

Keep your work area clean, and well lit.

Cluttered and dark areas may cause accidents.



Never use the tool in explosive atmospheres, such as in the presence of flammable liquids, gases or dust.

Sparks generated by power tools may ignite the flammable material.



Keep children and bystanders at a safe distance while operating the tool.

Distractions may cause losing control.



Electrical Safety

The tool plug must match the power outlet. Never modify the plug in any way. Do not use any adapter plugs with grounded power tools.

Modified plugs and different power outlets increase the risk of electric shock.



Avoid body contact with grounded surfaces, such as pipes, radiators, electric ranges and refrigerators.

The risk of electric shock increases if your body is grounded.

Do not expose the tool to rain or wet conditions.

Water entering into the tool increases the risk of electric shock.

Do not force the cord. Never use the cord to carry, lift or unplug the tool. Keep the cord away from heat, oil, sharp edges or moving parts.

Damaged or entangled cords increase the risk of electric shock.

When operating a tool outdoors, use an extension cord suitable for outdoor use.

Using an adequate outdoor extension cord reduces the risk of electric shock.

If operating the tool in a damp location cannot be avoided, use a ground fault circuit interrupter (GFCI) protected supply.

Using a GFCI reduces the risk of electric shock.

Personal safety

Stay alert, watch what you are doing and use common sense when operating a tool. Do not use a power tool while you are tired or under the influence of drugs, alcohol or medication.

A moment of distraction while operating the tool may result in personal injury.

Use personal protective equipment. Always wear eye protection.

Protective equipment such as safety glasses, anti-dust mask, non-skid shoes, hard hats and hearing protection used in the right conditions significantly reduce personal injury.



Prevent unintentional starting up. Ensure the switch is in the "OFF" position before connecting into the power source and / or battery as well as when carrying the tool.

Transporting power tools with the finger on the switch or connecting power tools with the switch in the "ON" position may cause accidents.

Remove any wrench or vice before turning the power tool on.

Wrenches or vices left attached to rotating parts of the tool may result in personal injury.

Do not overreach. Keep proper footing and balance at all times.

This enables a better control on the tool during unexpected situations.

Dress properly. Do not wear loose clothing or jewelry. Keep hair, clothes and gloves away from the moving parts.

Loose clothes or long hair may get caught in moving parts.



If you have dust extraction and recollection devices connected onto the tool, inspect their connections and use them correctly. Using these devices reduce dust-related risks.

Power Tools Use and Care

Do not force the tool. Use the adequate tool for your application.

The correct tool delivers a better and safer job at the rate for which it was designed.



Do not use the tool if the switch is not working properly.

Any power tool that cannot be turned ON or OFF is dangerous and should be repaired before operating.

Disconnect the tool from the power source and / or battery before making any adjustments, changing accessories or storing.

These measures reduce the risk of accidentally starting the tool.

Store tools out of the reach of children. Do not allow persons that are not familiar with the tool or its instructions to operate the tool.

Power tools are dangerous in the hands of untrained users.



Service the tool. Check the mobile parts are not misaligned or stuck. There should not be broken parts or other conditions that may affect its operation. Repair any damage before using the tool.

Most accidents are caused due to poor maintenance to the tools.



Keep the cutting accessories sharp and clean.

Cutting accessories in good working conditions are less likely to bind and are easier to control.

Use the tool, components and accessories in accordance with these instructions and the projected way to use it for the type of tool when in adequate working conditions.

Using the tool for applications different from those it was designed for, could result in a hazardous situation.

Service

Repair the tool in a TRUPER Authorized Service Center using only identical spare parts.

This will ensure that the safety of the power tool is maintained.

Children or people with reduced physical; sensory or mental capabilities shall not operate the tool, neither inexperienced people or without knowledge in the use of the tool, unless supervised by a person responsible of their safety or if receiving previous instructions about the tool operation.

Children shall be kept under supervision to double-check they will not play with the tool. Tight supervision shall be used with children or disabled persons to prevent from using or being close to any household tool.



This tool is in compliance with the Official Mexican Standard (NOM - Norma Oficial Mexicana).



Safety warnings for Cut Off Saws



TRUPER[®]
INDUSTRIAL

General

- Use only 14" abrasive discs within the 4 200 RPM levels with specified threads for the tool.
- Do not use this tool to cut wood, masonry, concrete or magnesium.
- Do not use worn or damaged discs.
- NEVER use larger discs than the size indicated for the tool.
- Wear gloves to manipulate the discs.



Before Operating the cut off saw

CAUTION • Fasten the work piece adequately to prevent body contact with the cutting disc, to prevent the disc from bending or losing control over the tool or work-piece.

CAUTION • Before each use inspect the retractile guard is working correctly. When the guard is not moving freely or it closes suddenly service it before operating the tool.

- Double-check the disc is correctly installed. Verify it is not hit or damaged. Replace disc immediately if damaged.
- Before using a new disc, or after being idle for long periods of time, turn on the cutter one minute before. In the event the disc has undetected damage it will burst in less than a minute. Do not allow any person to be in the disc cutting line.
- Keep the tool fixed in a perfectly level surface with enough space to handle and support the work piece.
- Fasten all screws and brackets before turning on the cutter.

WARNING • Remember the guards do not protect you from the moving disc underneath the work piece. Never put your hand under while the tool is running.

WARNING • ALWAYS keep the power supply cord away from the cutting area. The cord should NEVER hang on top of the work piece.

CAUTION • Never remove residues accumulated in the disc by hand. Use a brush.

CAUTION • Never try to free a stuck disc if the tool is not OFF and disconnected.

CAUTION • Do not try to stop the disc using a piece of wood or with the axle lock. Let it stop freely after turning off the machine.

CAUTION • Hold the tool by the insulated parts. If you accidentally cut a power cable the metallic parts will carry an electric shock to the operator. If this happens immediately turn off and disconnect the tool.

• When pieces are bigger than the work table support them on the left side and use auxiliary supports if needed.

After Operating the cut off saw

- Double-check the disc has come to a complete stop before replacing it, fastening the work piece, changing the cutting angle or turning off the tool.
- Periodically check all screws and nuts are perfectly fastened.
- To carry the tool, lower the cutter head and secure with the blocking lever. Lift the cutter by the carrying handle. Never use the cable or the control handle.

While Operating the cut off saw

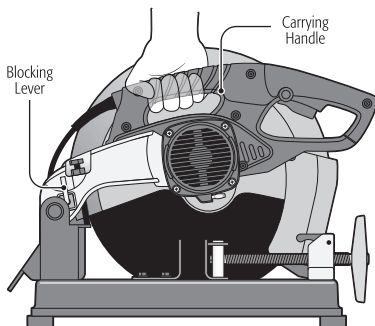
WARNING • Put hands or any part of your body away from the cutting area and cutting disc. When operating the tool firmly hold the cutter head by its handle to prevent accidental injuries and to prevent losing control.

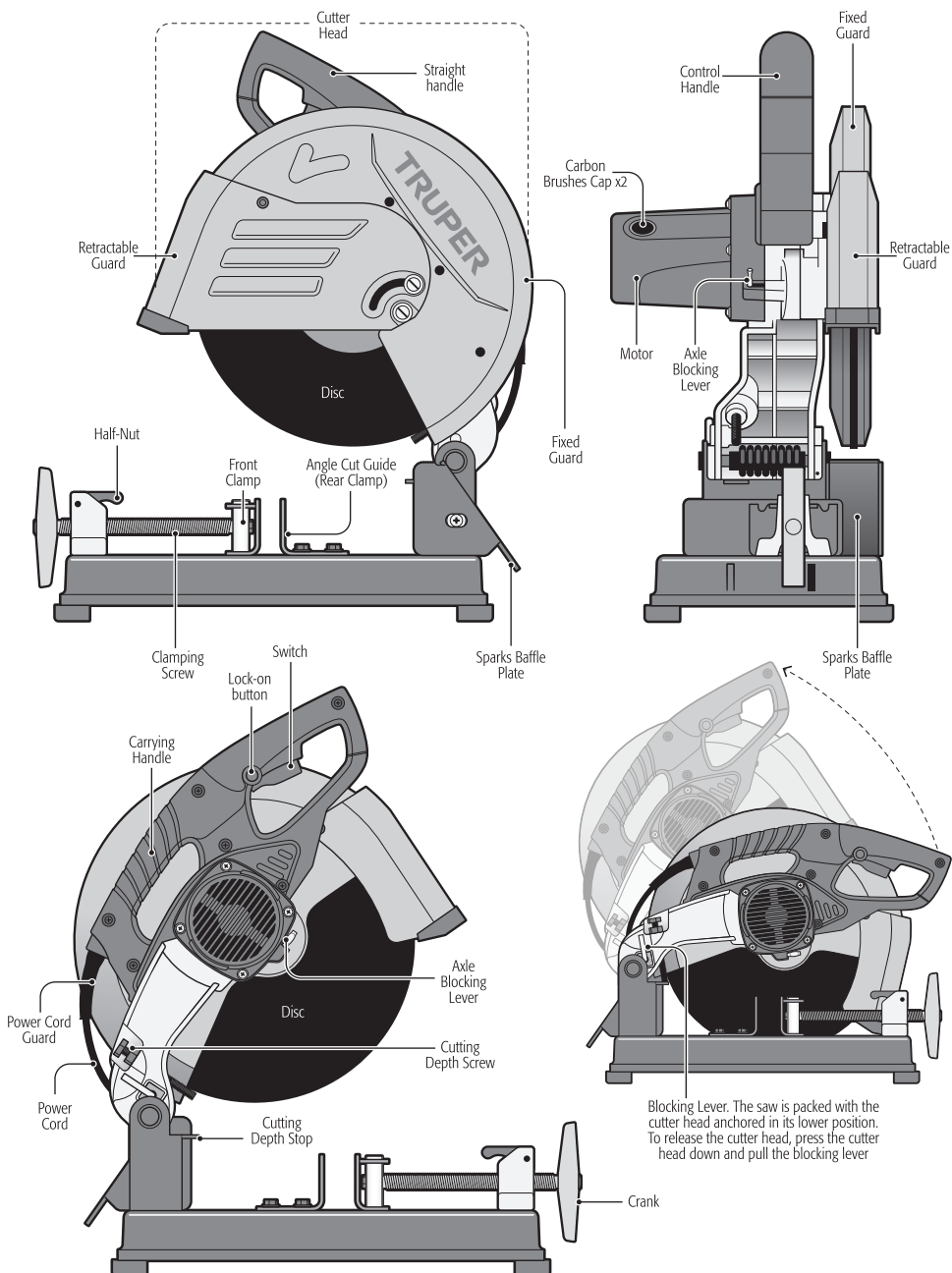
DANGER • Accidental contact with a rotating cutting disc could cause severe personal injury.

CAUTION • Never cut hands-free nor with a loose work piece. The clamping screw should fasten it.

- Feed material in a direction opposite to the disc rotation.
- Keep your body on a side of the cutting axle away from sparks or residues thrown by the tool.

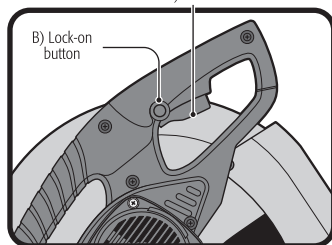
CAUTION • Do not try to remove scrap material while the cutting disc is rotating.





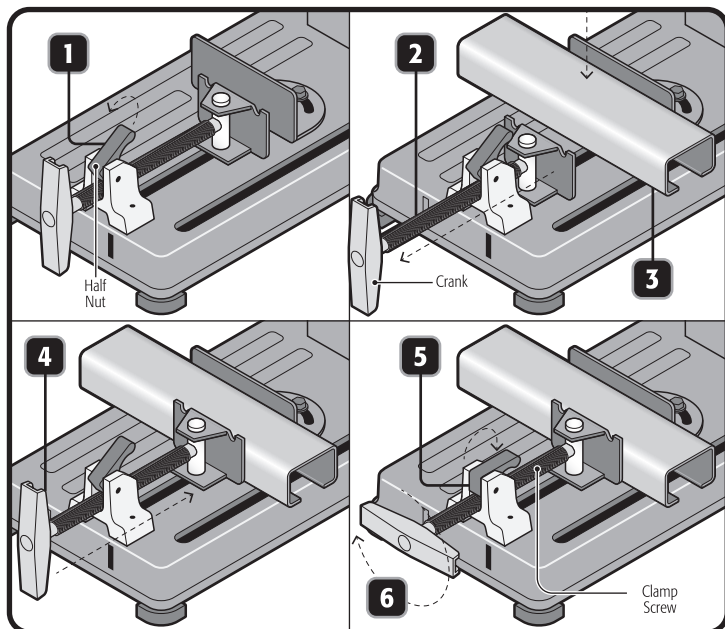
Turning On and Operation Control

- **Intermittent Operation:**
Connect the plug to the outlet.
Press the switch **(A)** to start the operation.
To stop use, just release the switch.
- **Continuous Operation:**
Connect the plug to the outlet.
Press the switch **(A)** and lock it, pressing continuous use button **(B)**.
To stop operation, press and release the switch.



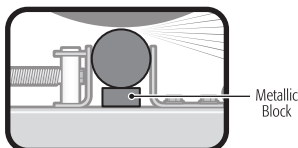
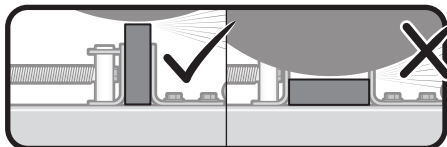
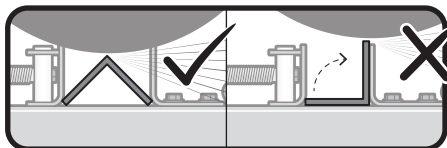
Fastening the Work Piece

1. Lift the half-nut.
2. Pull the crank outwards.
3. Set the work piece.
4. Push the crank until it touches the work piece.
5. Lower the half-nut.
6. Turn the crank to fasten the work piece.



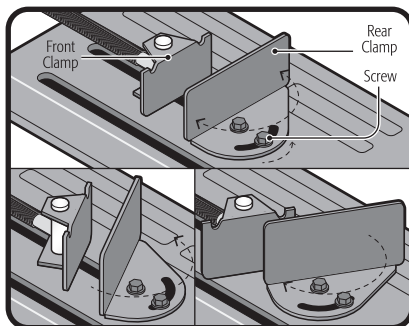
- Set the work piece in a way it cannot move while the disc is making contact.
- Pieces in an angle shall be worked inverted.
- Cuts will be more efficient if the disc cuts the lowest thickness section.
- Insert a metallic block slightly smaller than the work piece when the disc diameter is worn due to wear.

⚠ CAUTION • Never make hands-free cuts if the clamping screw does not correctly clamp the work piece.



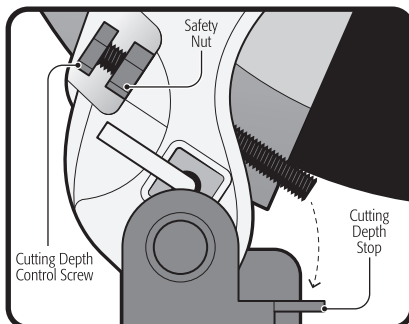
Cutting Angle Adjustment

- Loosen both knobs in the rear clamp.
- Turn it into the desired angle.
- Tighten back both knobs.
- The front clamp will rotate on its axle to automatically adjust to the work piece.



Cutting Depth Adjustment

- Loosen the safety nut.
- Turn the depth control screw into the desired height. When it is in contact with the depth stop shows the cutter head depth limit.
- Tighten back the safety nut.
- If the disc diameter is diminished due to wear, cutting depth should be increased.

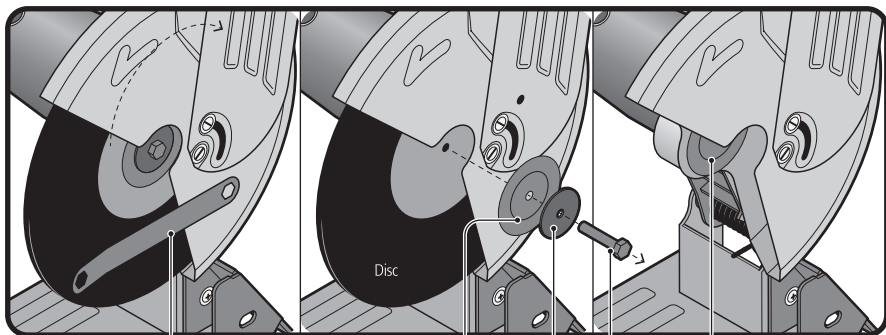
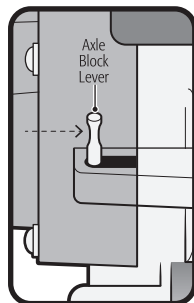


Disc Installation

- ⚠ CAUTION** • Disconnect the tool before replacing the disc.
- Move the retractile guard up.
 - Press the axle block lever inwards and at the same time turn the disc by hand until the axle is blocked.
 - Loosen the axle screw turning in a counterclockwise direction. Remove it all together with the washer, the exterior platter and the disc. **DO NOT REMOVE THE INNER PLATTER FROM THE DISC.**
 - Double-check the inner side of the disc

platters are clean and free of any substance.

- Set the new disc, exterior platter, the washer and the axle screw. Tight in a clockwise direction just enough to firmly support the disc. Excessive tightening could damage the disc or the axle thread.
- Move the retractile guard downwards and verify the shaft lock is released before turning on the tool.



Hex Key

Outer Platter

Washer

Axle Screw

Inner Platter

Cutting capabilities

TRUPER[®]
INDUSTRIAL

⚠ CAUTION The cutter is designed for ferrous materials. Do not try to cut wood, masonry or magnesium.

	Pipe	Square Pipe	Rectangular Pipe
90°	2.9"	3.1"	3.5" x 3.1"
45°	2.9"	2.3"	3.5" x 2.3"

Operation

- Double-check the disc is not making contact with the work piece before turning on the tool.
- Let the disc reach its maximum speed before starting to cut.
- Use the saw handle to lower the cutter head. Use a firm and continuous movement. Use care not to bang or push strongly the piecework with the disc. This prevents the disc from going out of rotation causing a bad cut or breaking the disc.
- Once the disc penetrates the work piece, continue cutting with a light and constant movement to get a clean and even cut.
- When finishing the cut raise the cutter head and wait for the disc to stop completely before checking the work piece.

Additional Advise

⚠ CAUTION • Double check there are no screws, rivets or any object incrusted in the section of the work piece you are about to cut.

⚠ CAUTION • Before making any cut take the necessary time to determine the ideal way to fasten the work piece.

⚠ CAUTION • Use extra care when working piece that are too small, too large or have an irregular shape.

- If working pieces larger than the work area use auxiliary supports. Keep the cut piece free to move aside the disc once the cut is finished.

⚠ WARNING • Do not allow other person to hold the work piece in the event it is larger than the work area.

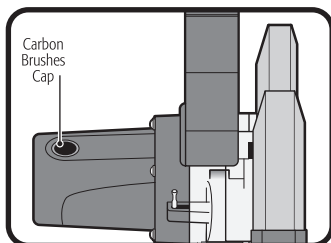
- Do not use this tool to cut pieces that are too small and that cannot easily be fastened with the clamping screw.

- In the event the work piece gets stuck in the disc, release the switch to turn off the tool, wait for all the mobile parts to stop, disconnect the saw and only then remove the stuck piece.
- If the motor stops suddenly while cutting, release the trigger switch, disconnect the tool and separate the disc from the work piece. Turn on the tool again and finish cutting.
- Making cuts too fast or stopping and starting many time in a short period of time may overload the motor, thus blowing the fuses or disconnecting the automatic switches.
- Voltage in the cables should not be 10% up or below 127 V~ Otherwise fuses may blow or automatic switches may be disconnected.

- To prevent damaging the motor, you need to apply pressurized air or vacuum frequently to avoid dust interfering with the normal motor ventilation.

Carbon Brush Replacement

- It is necessary to replace worn carbons (or burnt, broken or smaller than 0.19" long) with new carbons.
- Replace both carbon brushes every time you need to replace them.
- Remove the worn carbons from the carbon housing and use compressed air to remove the accumulated dust.
- Set the new carbons reversing the order, carbons should easily drop into the housings.
- After setting the new carbon brushes allow the tool to run unloaded 10 minutes so allow the carbons to adjust better.
- Use only **TRUPER[®]** spare carbon brushes with the adequate electric resistance for each type of motor. Carbon brushes that are out of specifications may damage the motor.



In the event of any problem contacting a Truper Authorized Service Center, please see our webpage www.truper.com to get an updated list, or call our toll-free numbers **800 690-6990** or **800-018-7873** to get information about the nearest Service Center.

AGUASCALIENTES **DE TODO PARA LA CONSTRUCCIÓN**
GRAL. BARRAGÁN #1201, COL. GREMIAL, C.P. 20030,
AGUASCALIENTES, AGS. TEL.: 449 994 0537

BAJA CALIFORNIA **SUCURSAL TIJUANA**
AV. LA ENCANTADA, LOTE #5, PARQUE INDUSTRIAL EL
FLORIDO II, C.P. 22244, TIJUANA, B.C.
TEL.: 664 969 5100

BAJA CALIFORNIA SUR **FIX FERRETERÍAS**
FELIPE ÁNGELES ESQ. RUIZ CORTÍNEZ S/N, COL. PUEBLO
NUEVO, C.P. 23670, CD. CONSTITUCIÓN, B.C.S.
TEL.: 615 132 1115

CAMPECHE **TORNILLERÍA Y FERRETERÍA AAA**
AV. ÁLVARO OBREGÓN #324, COL. ESPERANZA
C.P. 24080 CAMPECHE, CAMP. TEL.: 981 815 2808

CHIAPAS **FIX FERRETERÍAS**
AV. CENTRAL SUR #27, COL. CENTRO, C.P. 30700,
TAPACHULA, CHIS. TEL.: 962 118 4083

CHIHUAHUA **SUCURSAL CHIHUAHUA**
AV. SILVESTRE TERRAZAS #128-11, PARQUE INDUSTRIAL
BAFAR, CARRETERA MÉXICO CUAUHTÉMOC, C.P. 31415,
CHIHUAHUA, CHIH. TEL.: 614 434 0052

CIUDAD DE MÉXICO **FIX FERRETERÍAS**
EL MONSTRUO DE CORREGIDORA, CORREGIDORA # 22,
COL. CENTRO, C.P. 06060, CUAUHTÉMOC, CDMX.
TEL.: 55 5522 5051 / 5522 4861

COAHUILA **SUCURSAL TORREÓN**
CALLE METAL MECÁNICA #280, PARQUE INDUSTRIAL
ORIENTE, C.P. 27278, TORREÓN, COAH.
TEL.: 871 209 68 23

COLIMA **BOMBAS Y MOTORES BYMTESA DE MANZANILLO**
BLVD. MIGUEL DE LA MADRID #190, COL. 16 DE
SEPTIEMBRE, C.P. 28239, MANZANILLO, COL.
TEL.: 314 332 1986 / 332 8013

DURANGO **TORNILLOS ÁGUILA, S.A. DE C.V.**
MAZURIO #200, COL. LUIS ECHEVERRÍA, DURANGO,
DGO. TEL.: 618 817 1946 / 618 818 2844

ESTADO DE MÉXICO **SUCURSAL CENTRO JILOTEPEC**
PARQUE INDUSTRIAL # 1, COL. PARQUE INDUSTRIAL
JILOTEPEC, JILOTEPEC, EDO. DE MÉX. C.P. 54257
TEL.: 761 782 9101 EXT. 5728 Y 5102

GUANAJUATO **CÍA. FERRETERA NUEVO MUNDO S.A. DE C.V.**
AV. MÉXICO - JAPÓN #225, CD. INDUSTRIAL, C.P. 38010,
CELAYA, GTO. TEL.: 461 617 7578 / 79 / 80 / 88

GUERRERO **CENTRO DE SERVICIO ECLIPSE**
CALLE PRINCIPAL MZ1 LT. 1, COL. SANTA FE, C.P. 39010,
CHILPANCIÑO, GRO. TEL.: 747 478 5793

HIDALGO **FERREPRECIOS S.A. DE C.V.**
LIBERTAD ORIENTE #304 LOCAL 30, INTERIOR DE PASAJE
ROBLEDO, COL. CENTRO, C.P. 43600, TULANCINGO,
HGO. TEL.: 775 753 6615 / 775 753 6616

JALISCO **SUCURSAL GUADALAJARA**
AV. ADOLFO B. HORN # 6800, COL. SANTA CRUZ DEL
VALLE, C.P.: 45655, TLAJOMULCO DE ZUÑIGA, JAL.
TEL.: 33 3606 5285 AL 90

MICHOACÁN **FIX FERRETERÍAS**
AV. PASEO DE LA REPÚBLICA #3140-A, COL.
EX-HACIENDA DE LA HUERTA, C.P. 58050, MORELIA,
MICH. TEL.: 443 354 6858

MORELOS **FIX FERRETERÍAS**
CAPITÁN ANZURES #95, ESQ. JOSÉ PERDIZ, COL.
CENTRO, C.P. 62740, CUAUTLA, MOR.
TEL.: 735 352 8931

NAVARRIT **HERRAMIENTAS DE TEPIC**
MAZATLAN #117, COL. CENTRO, C.P. 63000, TEPIC, NAY.
TEL.: 311 258 0540

NUEVO LEÓN **SUCURSAL MONTERREY**
CARRETERA LAREDO #300, 1B MONTERREY PARKS,
COLONIA PUERTA DE ANAHUAC, C.P. 66052, ESCOBEDO,
NUEVO LEÓN, TEL.: 81 8352 8791 / 81 8352 8790

OAXACA **FIX FERRETERÍAS**
AV. 20 DE NOVIEMBRE #910, COL. CENTRO, C.P. 68300,
TUXTEPEC, OAX. TEL.: 287 106 3092

PUEBLA **SUCURSAL PUEBLA**
AV. PERIFÉRICO #2-A, SAN LORENZO ALMECATLA,
C.P. 72710, CUAUTLACINGO, PUE.
TEL.: 222 282 8282 / 84 / 85 / 86

QUERÉTARO **ARU HERRAMIENTAS S.A. DE C.V.**
AV. PUERTO DE VERACRUZ #110, COL. RANCHO DE
ENMEDIO, C.P. 76842, SAN JUAN DEL RÍO, QRO.
TEL.: 427 268 4544

QUINTANA ROO **FIX FERRETERÍAS**
CARRETERA FEDERAL MZ. 46 LT. 3 LOCAL 2, COL. EJIDAL,
C.P. 77710 PLAYA DEL CARMEN, Q.R.
TEL.: 984 267 3140

SAN LUIS POTOSÍ **FIX FERRETERÍAS**
AV. UNIVERSIDAD #1850, COL. EL PASEO, C.P. 78320,
SAN LUIS POTOSÍ, S.L.P. TEL.: 444 822 4341

SINALOA **SUCURSAL CULIACÁN**
AV. JESÚS KUIMATE SUR #4301, COL. HACIENDA DE LA
MORA, C.P. 80143, CULIACÁN, SIN.
TEL.: 667 173 9139 / 173 8400

SONORA **FIX FERRETERÍAS**
CALLE 5 DE FEBRERO #517, SUR LT. 25 MZ. 10, COL.
CENTRO, C.P. 85000, CD. OBREGÓN, SON.
TEL.: 644 413 2392

TABASCO **SUCURSAL VILLAHERMOSA**
CALLE HELIO LOTES 1, 2 Y 3 MZ. #1, COL. INDUSTRIAL,
2A ETAPA, C.P. 86010, VILLAHERMOSA, TAB.
TEL.: 993 353 7244

TAMAULIPAS **VM ORINGS Y REFACCIONES**
CALLE ROSITA #527 ENTRE 20 DE NOVIEMBRE Y GRAL.
RODRÍGUEZ, FRACC. REYNOSA, C.P. 88780, REYNOSA,
TAMS. TEL.: 899 926 7552

TLAXCALA **SERVICIOS Y HERRAMIENTAS INDUSTRIALES**
PABLO SIDAR #132, COL. BARRIO DE SAN BARTOLOMÉ,
C.P. 90970, SAN PABLO DEL MONTE, TLAX.
TEL.: 222 271 7502

VERACRUZ **LA CASA DISTRIBUIDORA TRUPER**
BLVD. PRIMAVERA ESQ. HORTENSIA S/N, COL.
PRIMAVERA C.P. 93308, POZA RICA, VER.
TEL.: 782 823 8100 / 826 8484

YUCATÁN **SUCURSAL MÉRIDA**
CALLE 33 #600 Y 602, LOCALIDAD ITZINCAB Y MULSAY,
MPIO. UMAN, C.P. 97390, MÉRIDA, YUC.
TEL.: 999 912 2451

Code	Model	Brand
17733	CM-14N2	TRUPER® INDUSTRIAL

Warranty. Duration: 5 year. Coverage: parts, components and workmanship against manufacturing or operating defects, except if used under conditions other than normal; when it was not operated in accordance with the instructive; was altered or repaired by personnel not authorized by **Truper®**. To make the warranty valid, only present the product in the establishment where you bought it or in Corregidora 35, Centro, Cuauhtémoc, CDMX, 06060, where you can also purchase parts, components, consumables and accessories. The costs of transportation of the product that derive from its fulfillment of its service network are included. **Truper will not require any proof of purchase to make the warranty effective.** Phone number 800-018-7873. Made in China. Imported by Truper, S.A. de C.V. Parque Industrial 1, Parque Industrial Jilotepec, Jilotepec, Edo. de Méx. C.P. 54257, Phone number 761 782 9100.

Stamp of the business. Delivery date:

