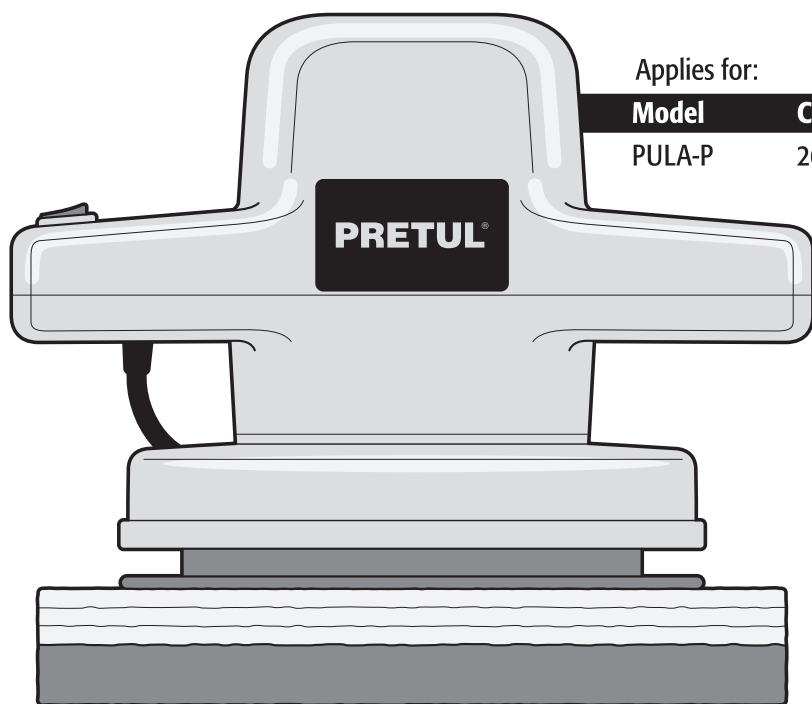


Manual

Orbital car polisher

3 000 RPM

Speed




Applies for:

Model	Code
PULA-P	26400



Read this manual thoroughly
before using the tool.



Technical data	3
Power requirements	3
 General power tool safety warnings	4
 Safety warnings for car polishers	5
Parts	6
Start up	7
Maintenance	7
Notes	8
Authorized Service Centers	9
Warranty Policy	10

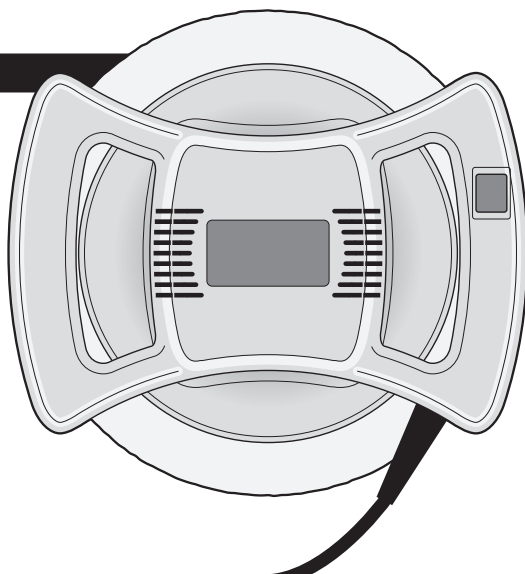
CAUTION

To gain the best performance of the tool, prolong the duty life, make the Warranty valid if necessary, and to avoid hazards of fatal injuries please read and understand this Manual before using the tool.

Keep this manual for future references.

The illustrations in this manual are for reference only. They might be different from the real tool.

PULA-P



PULA-P

Code	•	26400
Description	•	Car polisher
Voltage	•	127 V~
Frequency	•	60 Hz
Current	•	0.75 A
Power	•	0.14 Hp
Speed	•	3 000 RPM
Buffer diameter	•	10"
Duty cycle	•	20 minutes work x 10 minutes rest. Maximum 1:30 hours per day.
Conductors	•	18 AWG x 2C with insulating temperature of 140 °F
Insulating	•	Class II IP Grade • IP20

Power Cord Grips: Type Y.
Build Quality: Reinforced insulation.

⚠ WARNING Avoid the risk of electric shock or severe injury. When the power cable gets damaged it should only be replaced by the manufacturer or at a **TRUPER** Authorized Service Center. The build quality of the electric insulation is altered if spills or liquid gets into the tool while in use. Do not expose to rain, liquids and/or dampness.

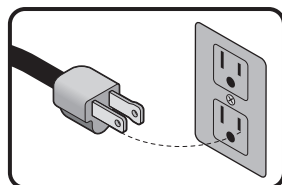
⚠ WARNING Before gaining access to the terminals all power sources should be disconnected.



Power requirements

⚠ WARNING Tools with double insulation and reinforced insulation are equipped with a polarized plug (one prong is wider than the other). This plug will only fit in the right way into a polarized outlet. If the plug cannot be introduced into the outlet, reverse the plug. If it still doesn't fit, call a qualified electrician to install for you a polarized outlet. Do not alter the plug in any way. Both insulation types eliminate the need of both a grounded third power cord with three prongs or a grounded power connection.

⚠ WARNING When using an extension cable, verify the gauge is enough for the power that your product needs. A lower gauge cable will cause voltage drop in the line, resulting in power loss and overheating. The following table shows the right size to use depending on cable's length and the ampere capability shown in the tool's nameplate. When in doubt use the next higher gauge.



Ampere Capacity	Number of Conductors	Extension gauge	
		from 5.9' to 49.2'	higher than 49.2'
from 0 A and up to 10 A	3 (one grounded)	18 AWG(*)	16 AWG
from 10 A and up to 13 A		16 AWG	14 AWG
from 13 A and up to 15 A		14 AWG	12 AWG
from 15 A and up to 20 A		8 AWG	6 AWG

* It is safe to use only if the extensions have a built-in artifact for over current protection.

AWG = American Wire Gauge. Reference: NMX-J-195-ANCE

⚠ WARNING When operating power tools outdoors, use a **VOLTECK** grounded extension cable labeled "For Outdoors Use". These extensions are especially designed for operating outdoors and reduce the risk of electric shock.



⚠ WARNING! Read carefully all safety warnings and instructions listed below. Failure to comply with any of these warnings may result in electric shock, fire and / or severe damage. **Save all warnings and instructions for future references.**

Work area

Keep your work area clean, and well lit.

Cluttered and dark areas may cause accidents.



Never use the tool in explosive atmospheres, such as in the presence of flammable liquids, gases or dust.

Sparks generated by power tools may ignite the flammable material.



Keep children and bystanders at a safe distance while operating the tool.

Distractions may cause losing control.



Electrical Safety

The tool plug must match the power outlet. Never modify the plug in any way. Do not use any adapter plugs with grounded power tools.

Modified plugs and different power outlets increase the risk of electric shock.



Avoid body contact with grounded surfaces, such as pipes, radiators, electric ranges and refrigerators.

The risk of electric shock increases if your body is grounded.

Do not expose the tool to rain or wet conditions.

Water entering into the tool increases the risk of electric shock.

Do not force the cord. Never use the cord to carry, lift or unplug the tool. Keep the cord away from heat, oil, sharp edges or moving parts.

Damaged or entangled cords increase the risk of electric shock.

When operating a tool outdoors, use an extension cord suitable for outdoor use.

Using an adequate outdoor extension cord reduces the risk of electric shock.

If operating the tool in a damp location cannot be avoided, use a ground fault circuit interrupter (GFCI) protected supply.

Using a GFCI reduces the risk of electric shock.

Personal safety

Stay alert, watch what you are doing and use common sense when operating a tool. Do not use a power tool while you are tired or under the influence of drugs, alcohol or medication.

A moment of distraction while operating the tool may result in personal injury.

Use personal protective equipment. Always wear eye protection.

Protective equipment such as safety glasses, anti-dust mask, non-skid shoes, hard hats and hearing protection used in the right conditions significantly reduce personal injury.



Prevent unintentional starting up. Ensure the switch is in the "OFF" position before connecting into the power source and / or battery as well as when carrying the tool.

Transporting power tools with the finger on the switch or connecting power tools with the switch in the "ON" position may cause accidents.

Remove any wrench or vice before turning the power tool on.

Wrenches or vices left attached to rotating parts of the tool may result in personal injury.

Do not overreach. Keep proper footing and balance at all times.

This enables a better control on the tool during unexpected situations.

Dress properly. Do not wear loose clothing or jewelry. Keep hair, clothes and gloves away from the moving parts.

Loose clothes or long hair may get caught in moving parts.



If you have dust extraction and recollection devices connected onto the tool, inspect their connections and use them correctly.

Using these devices reduce dust-related risks.

Power Tools Use and Care

Do not force the tool. Use the adequate tool for your application.

The correct tool delivers a better and safer job at the rate for which it was designed.



Do not use the tool if the switch is not working properly.

Any power tool that cannot be turned ON or OFF is dangerous and should be repaired before operating.

Disconnect the tool from the power source and / or battery before making any adjustments, changing accessories or storing.

These measures reduce the risk of accidentally starting the tool.

Store tools out of the reach of children. Do not allow persons that are not familiar with the tool or its instructions to operate the tool.

Power tools are dangerous in the hands of untrained users.



Service the tool. Check the mobile parts are not misaligned or stuck. There should not be broken parts or other conditions that may affect its operation. Repair any damage before using the tool.

Most accidents are caused due to poor maintenance to the tools.



Keep the cutting accessories sharp and clean.

Cutting accessories in good working conditions are less likely to bind and are easier to control.

Use the tool, components and accessories in accordance with these instructions and the projected way to use it for the type of tool when in adequate working conditions.

Using the tool for applications different from those it was designed for, could result in a hazardous situation.

Service

Repair the tool in a TRUPER® Authorized Service Center using only identical spare parts.

This will ensure that the safety of the power tool is maintained.



This tool is in compliance with the Official Mexican Standard (NOM - Norma Oficial Mexicana).

Safety warnings for car polishers

PRETUL®

This power tool is intended to function as a polisher.

Read all safety warnings, instructions, illustrations and specifications provided with this power tool.

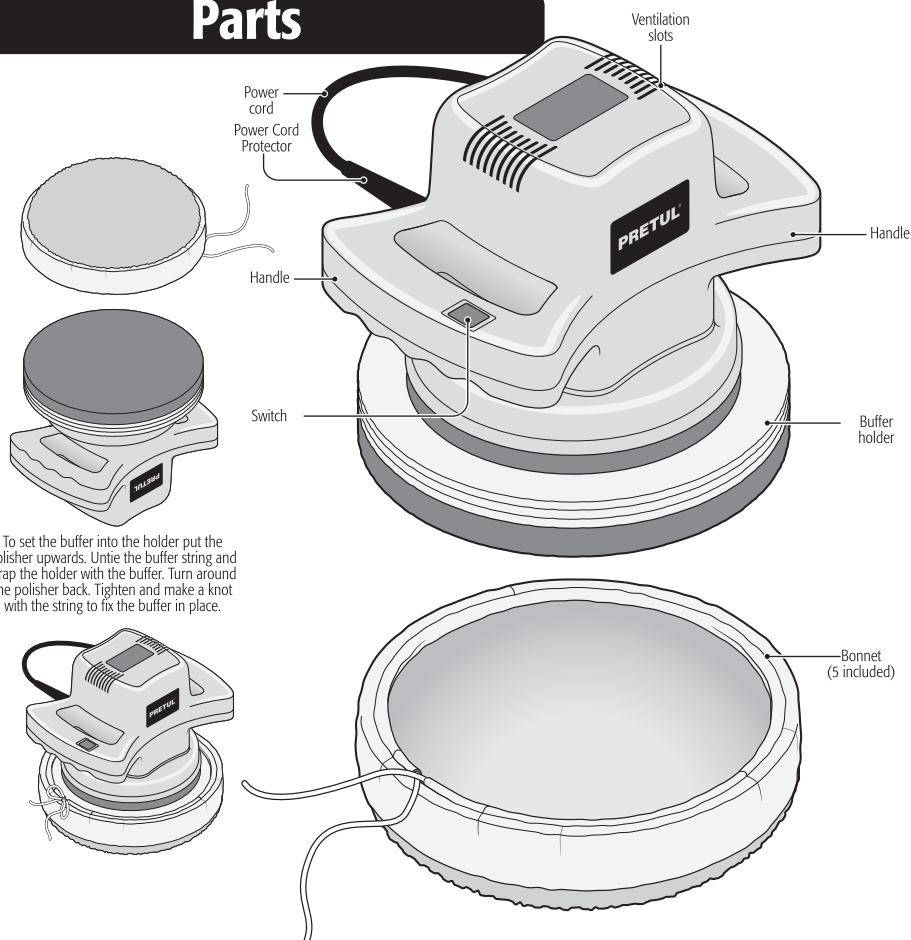
Failure to follow the instructions below may result in electric shock, fire, and/or serious injury.

- Operations such as grinding, sanding, planning, brushing or cutting to be performed with this power tool are not recommended.
- Operations for which this power tool was not designed may result in an accident and cause personal injury.
- Do not use accessories that are not specifically designed and recommended by the power tool manufacturer.
- The fact that the accessory may be installed on the power tool does not ensure safe operation.
- The rated speed of the accessory must be at least equal to the maximum speed marked on the power tool.
- Accessories running faster than their rated speed may break and become detached.
- The outside diameter and thickness of the accessories must be within the rated capacity of the power tool.
- Incorrectly sized accessories cannot be properly guarded or controlled.
- Accessories that do not match the installation devices of the power tool will cause unbalance, excessive vibration and may cause loss of control.
- Do not use a damaged accessory. Before each use, inspect the accessories, for example: Check buffer, base and cracks. Check the backs for cracks, tears or excessive wear.
- If the power tool or an accessory is dropped, inspect for damage or install an undamaged accessory. After inspecting and installing an accessory, stand clear and keep bystanders away from the plane of the rotating accessory, run the power tool at full speed with no load for one minute.
- Accessories with dies generally break during this time period.
- Use personal protective equipment. Depending on the application, use face shield, safety glasses. As appropriate, use a dust mask, hearing protection, gloves and shop apron capable of stopping small abrasive fragments or pieces of workpieces.
- Keep persons present at a safe distance from the work area. Anyone entering the work area should wear personal protective equipment.
- Place the power cord away from the rotating accessory.
- If control of the power tool is lost, the cord may be cut or entangled and the operator's arm or hand may be pulled into the rotating attachment.

- Never release the power tool until the accessory comes to a complete stop.
 - The rotating accessory may catch on a surface and pull the power tool out of your control.
 - Do not operate the power tool while carrying it at your side.
 - Accidental contact with the rotating accessory can snag on clothing, pulling the accessory toward your body.
 - Regularly clean the vents on the power tool.
 - The motor fan directs dust into the housing and excessive accumulation of metal dust can cause an electrical hazard.
 - Do not use the power tool near flammable materials.
 - Sparks can ignite these materials.
 - Do not use accessories that require liquid coolants.
 - Kickback is a sudden reaction to jamming or snagging of a caster wheel, backing, brush or other accessory. Jamming or snagging causes rapid stalling of the rotating accessory which in turn causes the power tool to force itself in an uncontrolled manner in the opposite direction of the accessory's rotation at the point of work.
 - Kickback can occur as a result of misuse of power tools and/or improper operating procedures or unsuitable conditions and can be avoided by taking the precautions outlined in essence below:
 - Maintain a firm grip on the power tool, keep your body and arm so that you can resist kickback (abrupt kickback) forces. Always use the auxiliary handle; if provided, for maximum control over kickback or motor torque reaction during start-up.
 - The operator can control torque and kickback force, if proper precautions are taken.
 - Never place your hand near the rotating attachment.
 - Attachments can kick back on the hand.
 - Do not place your body in the area where the power tool may move if kickback occurs.
 - This propels the power tool in the opposite direction of the blade movement at the point of snagging or binding.
 - Take special care when working around corners, sharp edges, and other areas. Avoid bouncing and jamming of the accessory.
- Specific safety instructions
- Do not allow loose parts on the polishing tassel, such as its fastening cords, to rotate freely. Guard or trim any loose attachment cords.
 - Loose or rotating fastening cords can become entangled in fingers or snag on workpieces.

- When using the car polisher never keep the car running inside an enclosed place.
- Make some test with the polisher before starting the job. If the tool makes strange noises or vibrates in an irregular way turn it off. Disconnect the tool and take it to a **TRUPER®** Authorized Service Center.
- The tool shall be OFF and disconnected when not in use.
- Prevent the tool to unexpectedly start. Keep fingers away from the On/Off switch when connecting the polisher to the power outlet.
- To avoid electric shock keep the tool dry and clean, free for any residual oil and grease.
- Always start and stop the polisher while the buffer is making contact with the surface. Otherwise the buffer may get out of the holder.
- Do not force the tool. Hold firmly but do not exercise downwards pressure. Otherwise, the tool movement will be slow, the job quality will diminish and the tool will be severely damaged. Bear in mind the tool is not for industrial use. It is built for household use.
- Do not use abrasive mixtures.
- Take care of the tool. The job is easier with a tool in good shape.

Parts



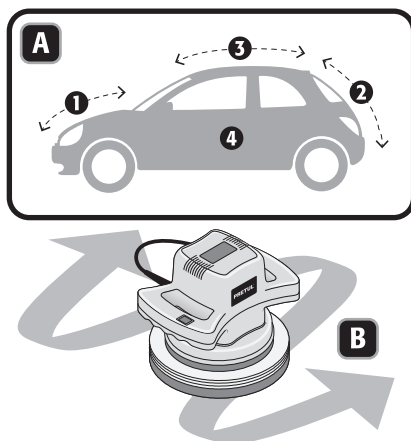
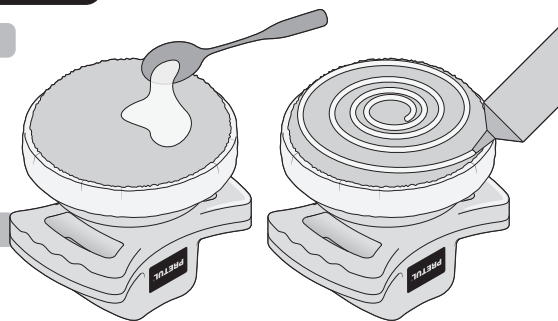
Start up

Buffer set up

- Apply and evenly distribute a spoonful of wax on the buffer surface.
- Apply in a spiral shape two portions of polish/cleaner on top of the wax previously applied to the buffer. **DO NOT** apply the polish/cleaner directly on the buffer.

Polish

- Place the power cord over your shoulder to take it out of the way while operating the polisher.
- Hold the tool with both hands using the respective handles.
- Set the polisher base on a flat surface on the car. Push the switch so the base will start rotating and applying wax.
- Polish as shown in diagram **A** to cover all the sides of the car. Use soft and long zigzag movements **(B)**.
- Turn off and disconnect the polisher. Remove the buffer and use it as a glove to apply wax to the parts unreachable for the tool, like the lower side of the mudguards, the door handles, etc.
- It is possible that oxidized paint will need more than one application. Do not use abrasive substances.
- Wax and polish / cleaner in excess will make the polishing job harder and time consuming. Also, the buffer useful life will be reduced.
- If the buffer constantly falls out of the holder is possible the excessive wax or polish / cleaner was applied.
- If the wax does not dilute fast is possible that too much wax was applied.



Maintenance

Cleansing and care

- To get the right cooling off, clean the ventilation slots and keeps them free of obstructions.
- Even tough the buffers are washing machine washable with cold water a little amount of detergent and medium temperature, to increase the buffer durability hand washing and drying is recommended.
- To prolong the useful life and shape of the buffer store the polisher with the holder facing up.
- To keep the holder dry and with its original shape remove the buffer from the holder when the polisher is not being used.
- Use soap and a dry sponge only to clean the polisher. Clean the housing with a humid cloth if necessary. Do not use solvents and do not immerse any part of the polisher in any liquid.

Storage

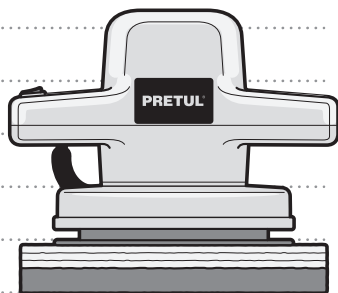
- Store the tool neatly in a dry place protected from dust and water.
- For best results, it is recommended to use a 10" diameter tassel and recommended truper brand accessories such as Pretul BOR-PULA-P.

Service

The tool does not have parts requiring maintenance. If the tool stops working after long working periods take it to a **TRUPER**® Authorized Service Center.

Carbon brush replacement

- Carbon Brushes need to be check regularly and when worn, replaced in a **TRUPER**® Authorized Service Center.
- After the carbons have been replaced, ask the technician to inspect if they run freely in the carbon housing and to let run the machine 5 minutes to even the contact of carbon and commutator.
- Use only **TRUPER**® original carbon brushes, designed specifically with the strength and electric resistance needed for each type of motor. Carbon brushes that are out of the specifications may damage the motor.
- Always change both carbon brushes when replacing them.



In the event of any problem contacting a Truper Authorized Service Center, please see our webpage www.truper.com to get an updated list, or call our toll-free numbers 800 690-6990 or 800-018-7873 to get information about the nearest Service Center.

AGUASCALIENTES **DE TODO PARA LA CONSTRUCCIÓN**
GRAL. BARRAGÁN #1201, COL. GREMIAL, C.P. 20030,
AGUASCALIENTES, AGS. TEL.: 449 994 0537

BAJA CALIFORNIA **SUCURSAL TIJUANA**
AV. LA ENCANTADA, LOTE #5, PARQUE INDUSTRIAL EL
FLORIDO II, C.P. 22244, TIJUANA, B.C.
TEL.: 664 969 5100

BAJA CALIFORNIA SUR **FIX FERRETERÍAS**
FELIPE ÁNGELES ESQ. RUIZ CORTÍNEZ S/N, COL. PUEBLO
NUEVO, C.P. 23670, CD. CONSTITUCIÓN, B.C.S.
TEL.: 613 132 1115

CAMPECHE **TORNILLERÍA Y FERRETERÍA AAA**
AV. ALVARO OBREGÓN #324, COL. ESPERANZA
C.P. 24080 CAMPECHE, CAMP. TEL.: 981 815 2808

CHIAPAS **FIX FERRETERÍAS**
AV. CENTRAL SUR #27, COL. CENTRO, C.P. 30700,
TAPACHULA, CHIS. TEL.: 962 118 4083

CHIHUAHUA **SUCURSAL CHIHUAHUA**
AV. SILVESTRE TERRAZAS #128-11, PARQUE INDUSTRIAL
BAFAR, CARRETERA MÉXICO CUAUHTÉMOC, C.P. 31415,
CHIHUAHUA, CHIH. TEL. 614 434 0052

CIUDAD DE MÉXICO **FIX FERRETERÍAS**
EL MONSTRUO DE CORREGIDORA, CORREGIDORA # 22,
COL. CENTRO, C.P. 06060, CUAUHTÉMOC, CDMX.
TEL: 55 5522 5031 / 5522 4861

COAHUILA **SUCURSAL TORREÓN**
CALLE METAL MECÁNICA #280, PARQUE INDUSTRIAL
ORIENTE, C.P. 27278, TORREÓN, COAH.
TEL.: 871 209 68 23

COLIMA **BOMBAS Y MOTORES BYMTESA DE MANZANILLO**
BLVD. MIGUEL DE LA MADRID #190, COL. 16 DE
SEPTIEMBRE, C.P. 28239, MANZANILLO, COL.
TEL.: 314 332 1986 / 332 8013

DURANGO **TORNILLOS ÁGUILA, S.A. DE C.V.**
MAZURIO #200, COL. LUIS ECHEVERRÍA, DURANGO,
DGO. TEL.: 618 817 1946 / 618 818 2844

ESTADO DE MÉXICO **SUCURSAL CENTRO JILOTEPEC**
PARQUE INDUSTRIAL # 1, COL. PARQUE INDUSTRIAL
JILOTEPEC, JILOTEPEC, EDO. DE MÉX. C.P. 54257
TEL: 761 782 9101 EXT. 5728 Y 5102

GUANAJUATO **CÍA. FERRETERA NUEVO MUNDO S.A. DE C.V.**
AV. MÉXICO - JAPÓN #225, CD. INDUSTRIAL, C.P. 38010,
CELAYA, GTO. TEL.: 461 617 7578 / 79 / 80 / 88

GUERRERO **CENTRO DE SERVICIO ECLIPSE**
CALLE PRINCIPAL MZ.1 LT. 1, COL. SANTA FE, C.P. 39010,
CHILPANCIÑO, GRO. TEL.: 747 478 5793

HIDALGO **FERREPRECIOS S.A. DE C.V.**
LIBERTAD ORIENTE #304 LOCAL 30, INTERIOR DE PASAJE
ROBLEDO, COL. CENTRO, C.P. 43600, TULANCINGO,
HGO. TEL.: 775 753 6615 / 775 753 6616

JALISCO **SUCURSAL GUADALAJARA**
AV. ADOLFO B. HORN # 6800, COL: SANTA CRUZ DEL
VALLE, C.P.: 45655, TLAJOMULCO DE ZUÑIGA, JAL.
TEL.: 33 3606 5285 AL 90

MICHOACÁN **FIX FERRETERÍAS**
AV. PASEO DE LA REPÚBLICA #3140-A, COL.
EX-HACIENDA DE LA HUERTA, C.P. 58050, MORELIA,
MICH. TEL.: 443 334 6858

MORELOS **FIX FERRETERÍAS**
CAPITÁN ANZURES #95, ESQ. JOSÉ PERDIZ, COL.
CENTRO, C.P. 62740, CUAUTLA, MOR.
TEL.: 735 352 8931

NAYARIT **HERRAMIENTAS DE TEPEC**
MAZATLAN #117, COL. CENTRO, C.P. 63000, TEPEC, NAY.
TEL.: 311 258 0540

NUEVO LEÓN **SUCURSAL MONTERREY**
CARRETERA LAREDO #300, 1B MONTERREY PARKS,
COLONIA PUERTA DE ANÁHUAC, C.P. 66052, ESCOBEDO,
NUEVO LEÓN, TEL.: 81 8352 8791 / 81 8352 8790

OAXACA **FIX FERRETERÍAS**
AV. 20 DE NOVIEMBRE #910, COL. CENTRO, C.P. 68300,
TUXTEPEC, OAX. TEL.: 287 106 3092

PUEBLA **SUCURSAL PUEBLA**
AV. PERIFÉRICO #2-A, SAN LORENZO ALMECATLA,
C.P. 72710, CUAUTLACINGO, PUE.
TEL.: 222 282 8282 / 84 / 85 / 86

QUERÉTARO **ARU HERRAMIENTAS S.A. DE C.V.**
AV. PUERTO DE VERACRUZ #110, COL. RANCHO DE
ENMEDIO, C.P. 76842, SAN JUAN DEL RÍO, QRO.
TEL.: 427 268 4544

QUINTANA ROO **FIX FERRETERÍAS**
CARRETERA FEDERAL MZ. 46 LT. 3 LOCAL 2, COL. EJIDAL,
C.P. 77710 PLAYA DEL CARMEN, Q.R.
TEL.: 984 267 3140

SAN LUIS POTOSÍ **FIX FERRETERÍAS**
AV. UNIVERSIDAD #1850, COL. EL PASEO, C.P. 78320,
SAN LUIS POTOSÍ, S.L.P. TEL.: 444 822 4341

SINALOA **SUCURSAL CULIACÁN**
AV. JESÚS KUMATE SUR #4301, COL. HACIENDA DE LA
MORA, C.P. 80143, CULIACÁN, SIN.
TEL.: 667 173 9139 / 173 8400

SONORA **FIX FERRETERÍAS**
CALLE 5 DE FEBRERO #517, SUR LT. 25 MZ. 10, COL.
CENTRO, C.P. 85000, CD. OBREGÓN, SON.
TEL.: 644 413 2392

TABASCO **SUCURSAL VILLAHERMOSA**
CALLE HELIO LOTES 1, 2 Y 3 MZ. #1, COL. INDUSTRIAL,
2A ETAPA, C.P. 86010, VILLAHERMOSA, TAB.
TEL.: 993 353 7244

TAMAULIPAS **VM ORINGS Y REFACCIONES**
CALLE ROSITA #527 ENTRE 20 DE NOVIEMBRE Y GRAL.
RODRÍGUEZ, FRACC. REYNOSA, C.P. 88780, REYNOSA,
TAMS. TEL.: 899 926 7552

TLAXCALA **SERVICIOS Y HERRAMIENTAS INDUSTRIALES**
PABLO SIDAR #132, COL. BARRIO DE SAN BARTOLOMÉ,
C.P. 90970, SAN PABLO DEL MONTE, TLAX.
TEL.: 222 271 7502

VERACRUZ **LA CASA DISTRIBUIDORA TRUPER**
BLVD. PRIMAVERA, ESQ. HORTENSIA S/N, COL.
PRIMAVERA, C.P. 93308, POZA RICA, VER.
TEL.: 782 823 8100 / 826 8484

YUCATÁN **SUCURSAL MÉRIDA**
CALLE 33 #600 Y 602, LOCALIDAD ITZINCAB Y MULSA,
MPIO. UMAN, C.P. 97390, MÉRIDA, YUC.
TEL.: 999 912 2451

Model	Code	Brand
-------	------	-------

PULA-P	26400	PRETUL®
--------	-------	----------------

Warranty. Duration: 1 year. Coverage: parts, components and workmanship against manufacturing or operating defects, except if used under conditions other than normal; when it was not operated in accordance with the instructive; was altered or repaired by personnel not authorized by **Truper®**. To make the warranty valid, present the product, stamped policy or invoice or receipt or voucher, in the establishment where you bought it or in Corregidora 22, Centro, Cuauhtémoc, CDMX, 06060, where you can also purchase parts, components, consumables and accessories. It includes the costs of transportation of the product that derive from its fulfillment of its service network. . Phone number **800-018-7873**. Made in China. Imported by Truper, S.A. de C.V. Parque Industrial 1, Parque Industrial Jilotepec, Jilotepec, Edo. de Méx. C.P. 54257, Phone number 761 782 9100.



**1
YEAR**

Stamp of the business. Delivery date: