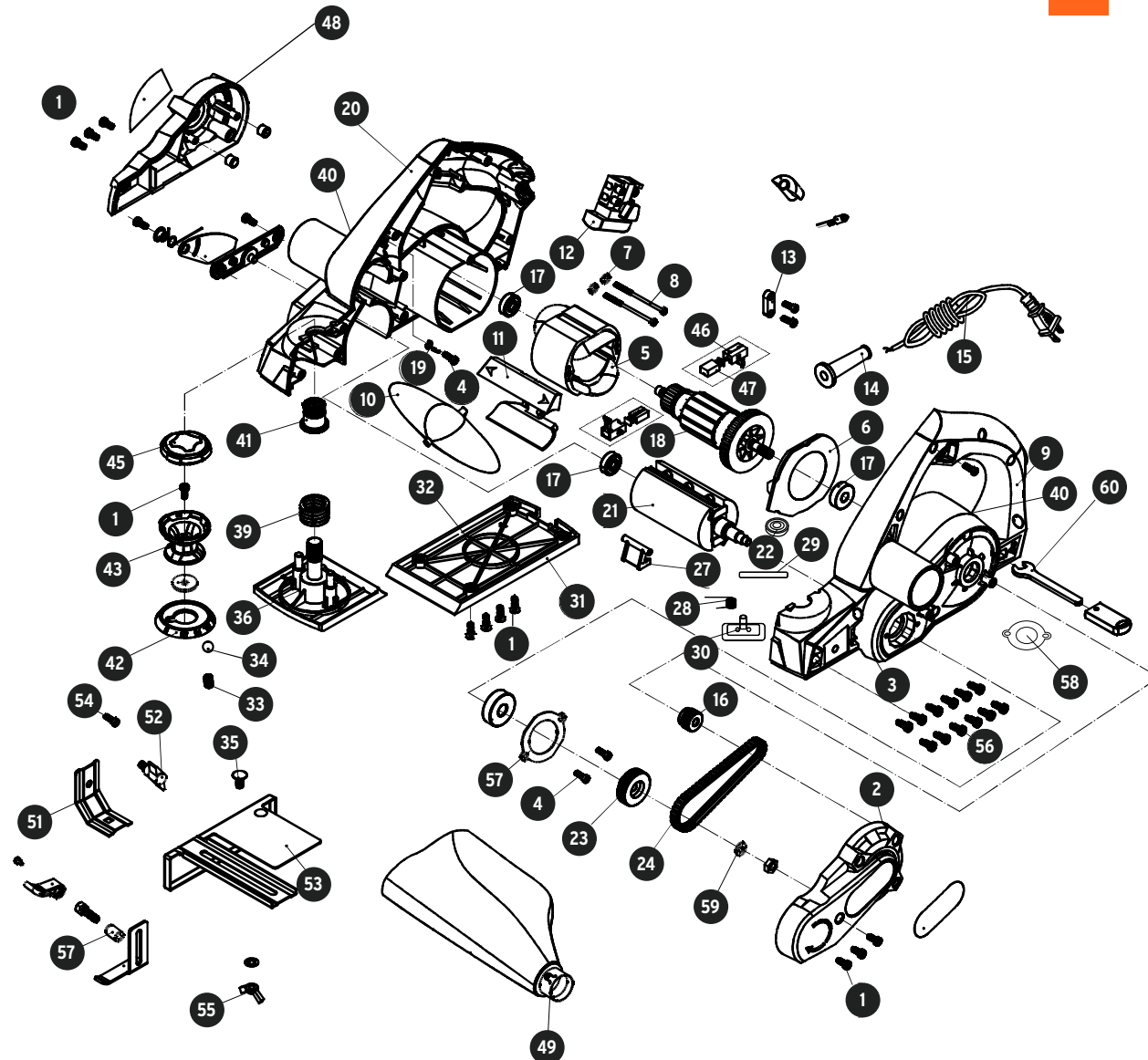


A

No.	Código	Clave	Descripción
1	924322	R1-CEPEL-4-1/2NX	Tornillo
2	924323	R2-CEPEL-4-1/2NX	Cubierta de banda
3	924324	R3-CEPEL-4-1/2NX	Tapa de baleros
4	924325	R4-CEPEL-4-1/2NX	Tornillo
5	924326	R5-CEPEL-4-1/2NX	Campo
6	924327	R6-CEPEL-4-1/2NX	Deflector
7	924328	R7-CEPEL-4-1/2NX	Arandela plana
8	924329	R8-CEPEL-4-1/2NX	Tornillo
9	924330	R9-CEPEL-4-1/2NX	Manija izquierda
10	924331	R10-CEPEL-4-1/2NX	Balanza de polvo
11	924332	R11-CEPEL-4-1/2NX	Perilla selectora de dirección
12	924333	R12-CEPEL-4-1/2NX	Interruptor
13	924334	R13-CEPEL-4-1/2NX	Opresor de cable
14	924335	R14-CEPEL-4-1/2NX	Protector de cable
15	924336	R15-CEPEL-4-1/2NX	Cable de alimentación
16	924337	R16-CEPEL-4-1/2NX	Polea
17	924338	R17-CEPEL-4-1/2NX	Balero de bolas
18	924339	R18-CEPEL-4-1/2NX	Armadura
19	924340	R19-CEPEL-4-1/2NX	Tuerca
20	924341	R20-CEPEL-4-1/2NX	Carcasa de mango derecha
21	924342	R21-CEPEL-4-1/2NX	Cabeza de corte
22	924343	R22-CEPEL-4-1/2NX	Balero de bolas
23	924344	R23-CEPEL-4-1/2NX	Polea de banda
24	924345	R24-CEPEL-4-1/2NX	Banda
27	924346	R27-CEPEL-4-1/2NX	Soporte
28	924347	R28-CEPEL-4-1/2NX	Resorte
29	924348	R29-CEPEL-4-1/2NX	Perno de eje
30	924349	R30-CEPEL-4-1/2NX	Zapata
31	924350	R31-CEPEL-4-1/2NX	Zapata trasera
32	924351	R32-CEPEL-4-1/2NX	Placa de guía
33	924352	R33-CEPEL-4-1/2NX	Resorte
34	924353	R34-CEPEL-4-1/2NX	Balín
35	924354	R35-CEPEL-4-1/2NX	Tornillo
36	924355	R36-CEPEL-4-1/2NX	Zapata delantera
39	924358	R39-CEPEL-4-1/2NX	Resorte
40	924359	R40-CEPEL-4-1/2NX	Carcasa
41	924360	R41-CEPEL-4-1/2NX	Eje de regulación
42	924361	R42-CEPEL-4-1/2NX	Base graduada
43	924362	R43-CEPEL-4-1/2NX	Perilla de regulación
45	924363	R45-CEPEL-4-1/2NX	Tapón de perilla
46	924364	R46-CEPEL-4-1/2NX	Porta carbón
47	924365	R47-CEPEL-4-1/2NX	Carbones
48	924366	R48-CEPEL-4-1/2NX	Cubierta de motor
49	924367	R49-CEPEL-4-1/2NX	Exportador de polvo
51	924368	R51-CEPEL-4-1/2NX	Marco de fijación
52	924369	R52-CEPEL-4-1/2NX	Perilla de ajuste
53	924370	R53-CEPEL-4-1/2NX	Guías paralelas
54	924371	R54-CEPEL-4-1/2NX	Tornillo
55	924372	R55-CEPEL-4-1/2NX	Tuerca mariposa
56	924373	R56-CEPEL-4-1/2NX	Tornillo
57	924374	R57-CEPEL-4-1/2NX	Protector de balero
58	924375	R58-CEPEL-4-1/2NX	Protector de balero
59	924376	R59-CEPEL-4-1/2NX	Arandela plana
60	924379	R60-CEPEL-4-1/2NX	Llave



A

Si tienes dudas, llama a la Línea de Comunicación Directa

**800-0187-873** Exclusivo para México