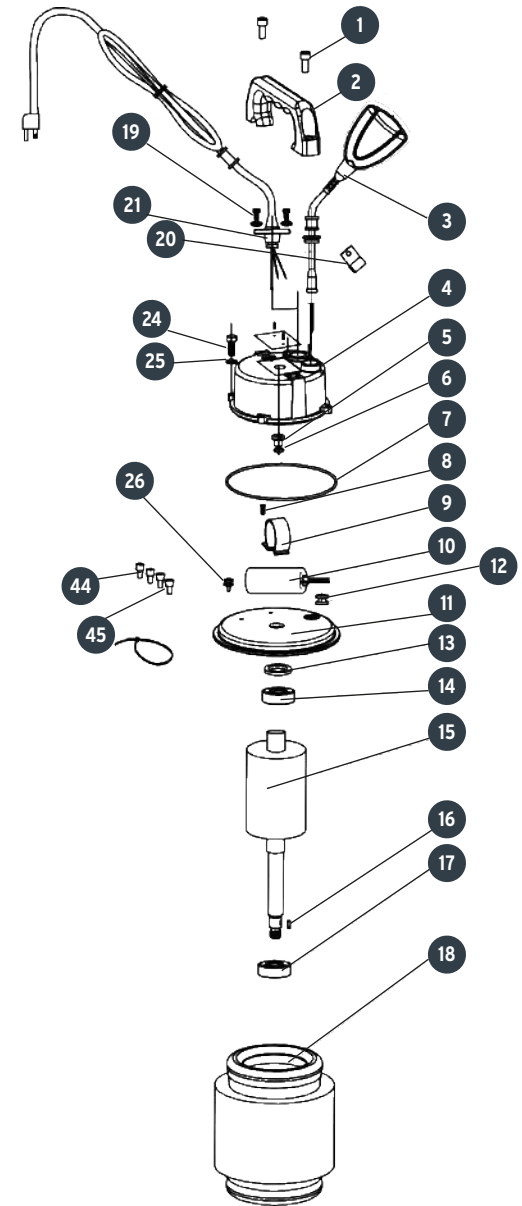
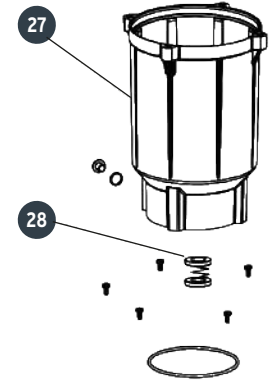


A

No.	Código	Clave	Descripción
1	935084	R1-BOS-1/2LPX	Tornillos de cabeza hexagonal M5X20
2	935085	R2-BOS-1/2LPX	Empuñadura
3	935086	R3-BOS-1/2LPX	Flotador c/ Interruptor
4	935087	R4-BOS-1/2LPX	Cubierta Superior
5	935088	R5-BOS-1/2LPX	Tornillo M7.7X10
6	935089	R6-BOS-1/2LPX	Empaque Ø 11X 1.7
7	935090	R7-BOS-1/2LPX	Sello Ø 98X 2
8	935091	R8-BOS-1/2LPX	Tornillo M4X8
9	935092	R9-BOS-1/2LPX	Grapa del Capacitor
10	935093	R10-BOS-1/2LPX	Capacitor 25uF / 250 VAC
11	935094	R11-BOS-1/2LPX	Cubierta del Motor
12	935095	R12-BOS-1/2LPX	Protector del Cable
13	935096	R13-BOS-1/2LPX	Arandela Ondulada
14	935097	R14-BOS-1/2LPX	Balero de Bolas 6201
15	935098	R15-BOS-1/2LPX	Rotor
16	935099	R16-BOS-1/2LPX	Cuñero
17	935100	R17-BOS-1/2LPX	Balero de Bolas 6202
18	935101	R18-BOS-1/2LPX	Estator
19	935102	R19-BOS-1/2LPX	Tornillo M5X12
20	935103	R20-BOS-1/2LPX	Grapa del Cable
21	935104	R21-BOS-1/2LPX	Cable
24	935105	R24-BOS-1/2LPX	Tornillos de cabeza hexagonal M5X20
25	935106	R25-BOS-1/2LPX	Arandela de Presión Ø8
26	935107	R26-BOS-1/2LPX	Tornillo M4x8
27	935108	R27-BOS-1/2LPX	Carcaza de Motor
28	935109	R28-BOS-1/2LPX	Sello Mecanico



A



B

No.	Código	Clave	Descripción
29	935110	R29-BOS-1/2LPX	Tornillo M5X12
30	935111	R30-BOS-1/2LPX	Arandela de Presión Ø8
31	935112	R31-BOS-1/2LPX	Empaque Ø 90x2.65
32	935113	R32-BOS-1/2LPX	Cubierta de la camara de Aceite
33	935114	R33-BOS-1/2LPX	Reten
34	935115	R34-BOS-1/2LPX	Empaque Ø 118x2.65
35	935116	R35-BOS-1/2LPX	Conector de Descarga
36	935117	R36-BOS-1/2LPX	Empaque Ø 26.5x2.65
37	935118	R37-BOS-1/2LPX	Impulsor
38	935119	R38-BOS-1/2LPX	Cubierta de la camara de Aceite Ø15
39	935120	R39-BOS-1/2LPX	Tuerca M16
40	935121	R40-BOS-1/2LPX	Cuerpo de Bomba
41	935122	R41-BOS-1/2LPX	Rejilla
42	935123	R42-BOS-1/2LPX	Tacón
43	935124	R43-BOS-1/2LPX	Tornillo M5X15
44	935125	R44-BOS-1/2LPX	Conector de Cable
45	935126	R45-BOS-1/2LPX	Conector de Cable



B

