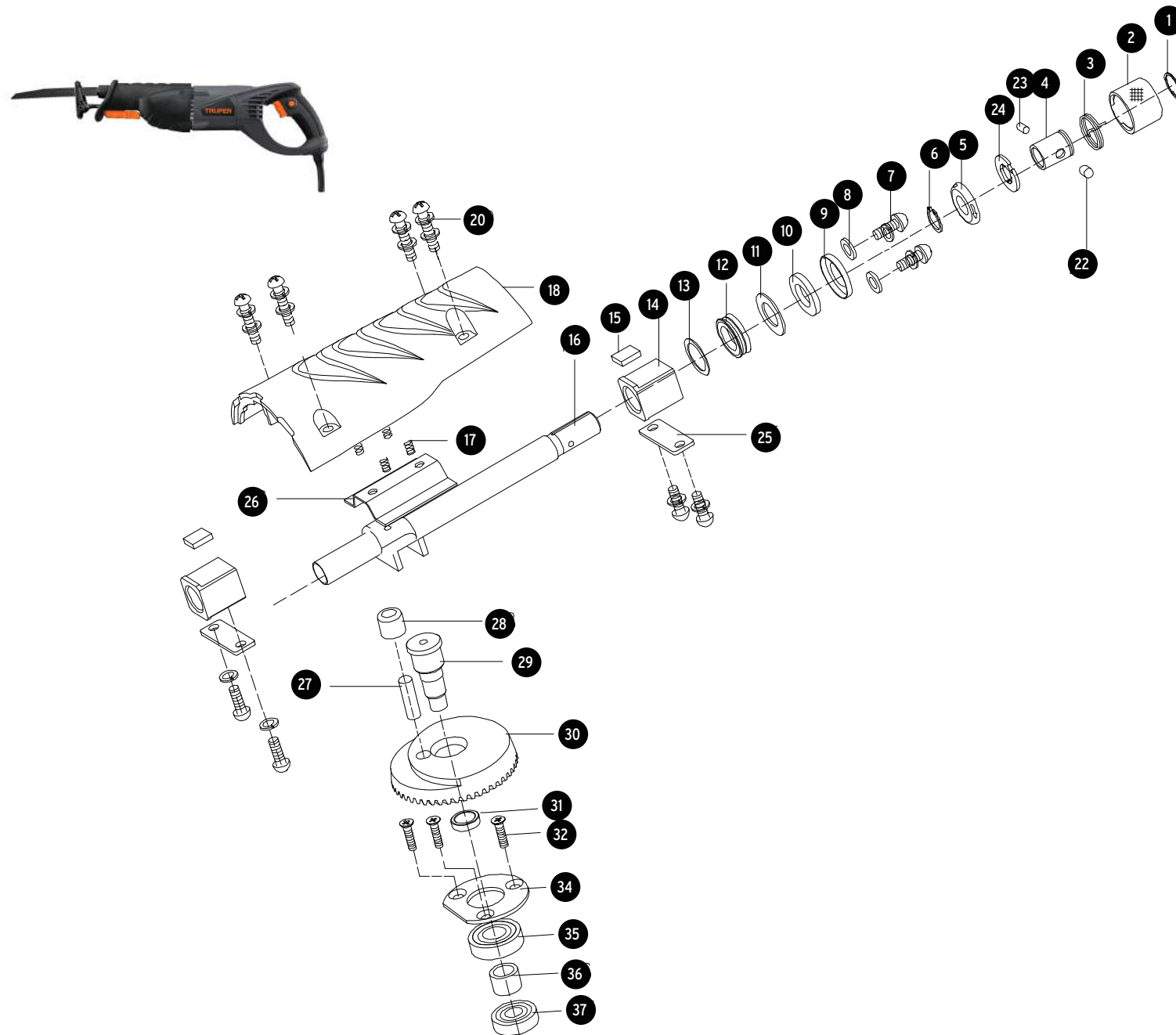


A

| No. | Código | Clave | Descripción |
|-----|--------|-------------|----------------------|
| 1 | 924977 | R1-SISA-N2 | Seguro de resorte |
| 2 | 924978 | R2-SISA-N2 | Manga |
| 3 | 924979 | R3-SISA-N2 | Resorte de torsión |
| 4 | 924980 | R4-SISA-N2 | Guía de manga |
| 5 | 924981 | R5-SISA-N2 | Retén de manga |
| 6 | 924982 | R6-SISA-N2 | Seguro "C" |
| 8 | 924983 | R8-SISA-N2 | Arandela plana Ø5 |
| 9 | 924984 | R9-SISA-N2 | Tapa de fieltro |
| 10 | 924985 | R10-SISA-N2 | Filtro |
| 11 | 924986 | R11-SISA-N2 | Arandela plana Ø24.7 |
| 12 | 924987 | R12-SISA-N2 | Retén |
| 13 | 924988 | R13-SISA-N2 | Arandela plana Ø16.4 |
| 14 | 924989 | R14-SISA-N2 | Rodamiento de bloque |
| 15 | 924990 | R15-SISA-N2 | Filtro |
| 16 | 924991 | R16-SISA-N2 | Eje o barra |
| 17 | 924992 | R17-SISA-N2 | Resorte |
| 18 | 924993 | R18-SISA-N2 | Carcasa de caja |
| 19 | 924994 | R19-SISA-N2 | Arandela de presión |
| 21 | 924995 | R20-SISA-N2 | Arandela plana |
| 22 | 924996 | R21-SISA-N2 | Botón |
| 23 | 924997 | R23-SISA-N2 | Resorte |
| 24 | 924998 | R24-SISA-N2 | Perno Ø3x15.8 |
| 25 | 924999 | R25-SISA-N2 | Soporte de cubierta |
| 26 | 925000 | R26-SISA-N2 | Placa de respaldo |
| 27 | 925001 | R27-SISA-N2 | Perno |
| 28 | 925002 | R28-SISA-N2 | Rodamiento de aguja |
| 29 | 925003 | R29-SISA-N2 | Árbol de levas |
| 30 | 925004 | R30-SISA-N2 | Engrane |
| 31 | 925005 | R31-SISA-N2 | Espaciador |
| 34 | 925006 | R34-SISA-N2 | Brida |
| 35 | 925007 | R35-SISA-N2 | Balero 6001-2RS |
| 36 | 925008 | R36-SISA-N2 | Tope |
| 37 | 925009 | R37-SISA-N2 | Balero 609.2RS |



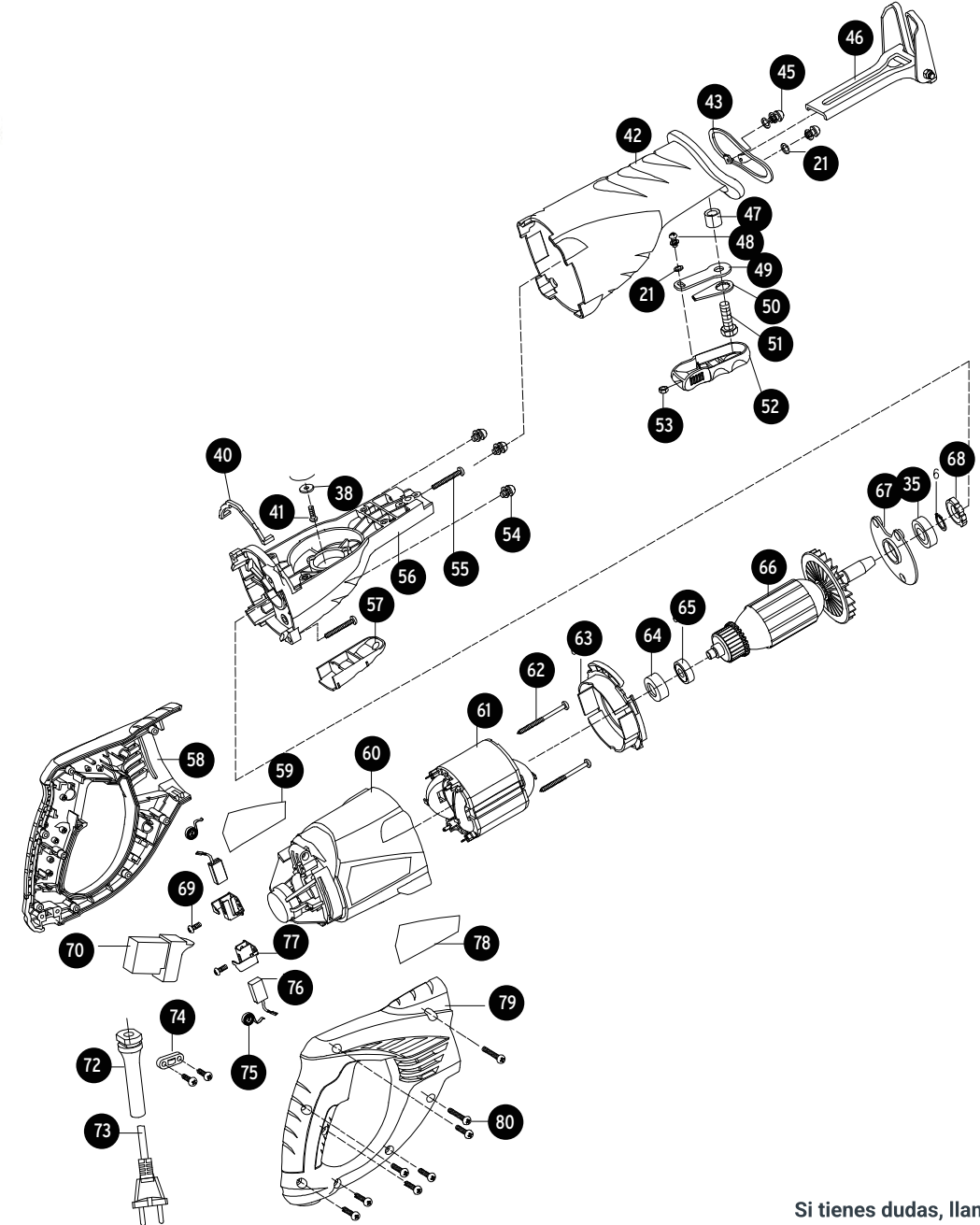
A

Si tienes dudas, llama a la
Línea de Comunicación Directa

800-0187-873 Exclusivo
para México

B

| No. | Código | Clave | Descripción |
|-----|--------|-------------|----------------------------|
| 38 | 925010 | R38-SISA-N2 | Arandela Ø5.2 |
| 39 | 925011 | R39-SISA-N2 | Arandela de presión Ø4 |
| 40 | 925012 | R40-SISA-N2 | Sello de almohadilla |
| 42 | 925013 | R42-SISA-N2 | Manga de hule |
| 43 | 925014 | R43-SISA-N2 | Sello |
| 46 | 925015 | R46-SISA-N2 | Placa de apoyo |
| 47 | 925016 | R47-SISA-N2 | Cojinete |
| 49 | 925017 | R49-SISA-N2 | Placa de pad |
| 50 | 925018 | R50-SISA-N2 | Ajustador de placa |
| 52 | 925019 | R52-SISA-N2 | Palanca de bloqueo |
| 53 | 925020 | R53-SISA-N2 | Tuerca M4 |
| 56 | 925021 | R56-SISA-N2 | Caja de engranes |
| 57 | 925022 | R57-SISA-N2 | Soporte de aislante |
| 58 | 925023 | R58-SISA-N2 | Carcasa de mango izquierdo |
| 60 | 925024 | R60-SISA-N2 | Carcasa de motor |
| 61 | 925025 | R61-SISA-N2 | Campo |
| 63 | 925026 | R63-SISA-N2 | Deflector de ventilador |
| 64 | 925027 | R64-SISA-N2 | Cubierta de balero |
| 65 | 925028 | R65-SISA-N2 | Balero 608-2Z |
| 66 | 925029 | R66-SISA-N2 | Armadura |
| 67 | 925030 | R67-SISA-N2 | Tapa de balero |
| 68 | 925031 | R68-SISA-N2 | Sello de balero |
| 70 | 925032 | R70-SISA-N2 | Interruptor |
| 72 | 925033 | R72-SISA-N2 | Protector de cable |
| 73 | 925034 | R73-SISA-N2 | Cable de alimentación |
| 74 | 925035 | R74-SISA-N2 | Opresor de cable |
| 75 | 925036 | R75-SISA-N2 | Resorte de carbón |
| 77 | 925037 | R77-SISA-N2 | Porta carbón |
| 79 | 925038 | R79-SISA-N2 | Carcasa de mango derecho |



B

Si tienes dudas, llama a la
Línea de Comunicación Directa

800-0187-873 Exclusivo
para México